



Waveguide Termination

WT75S

WR75, 9.84-15.0 GHz, 20 Watts, Square Cover Flange

Rev 1

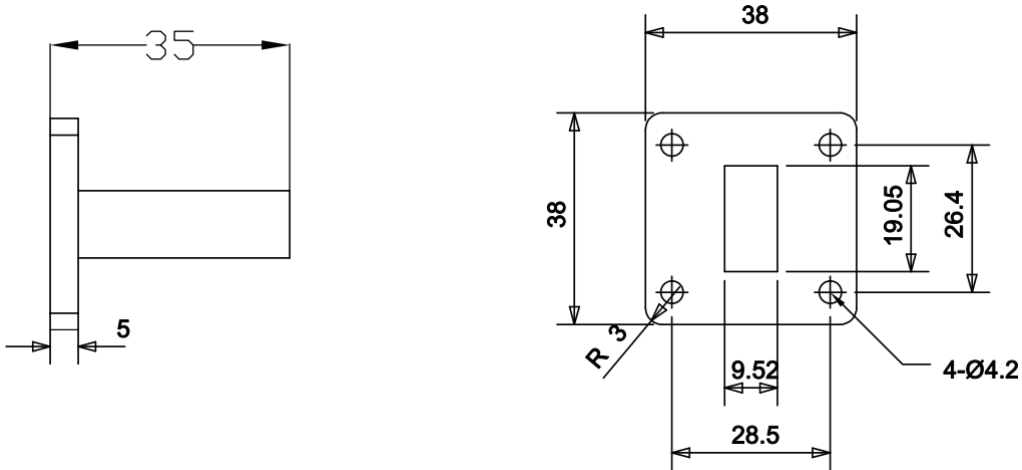
Electrical

| | |
|-----------------------|-----------------|
| Frequency Range | 9.84-15.0 GHz |
| VSWR | 1.2 max |
| Input Avg Power | 20 Watts @ 25°C |
| Operating Temperature | -40°C ~ +70°C |

Mechanical

| | |
|--------------------|--------------|
| Waveguide Size | WR75(R120) |
| Flange Type | IEC: UBR120 |
| Waveguide Material | Aluminum |
| Waveguide Finish | Grey painted |
| Net Weight | Approx 25g |

Dimensions(mm)





Waveguide Termination

WT75S

WR75, 9.84-15.0 GHz, 20 Watts, Square Cover Flange

Rev 1

Typical Test Data

