

## Waveguide Termination

**WT62S**

**WR62, 11.9-18.0 GHz, 20 Watts, Square Cover Flange**

Rev 2

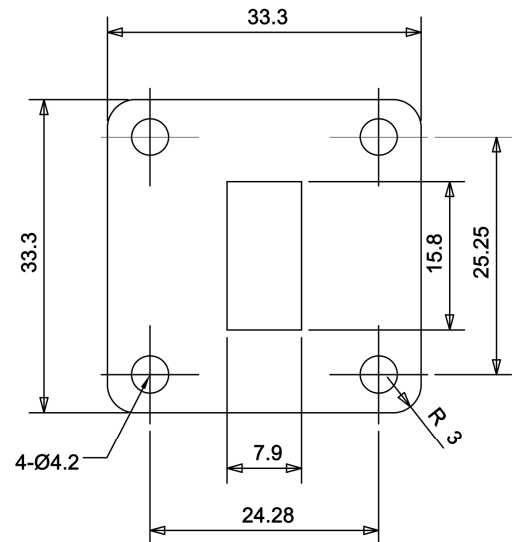
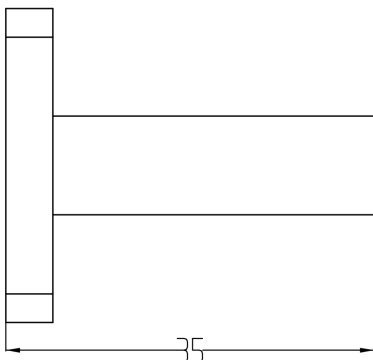
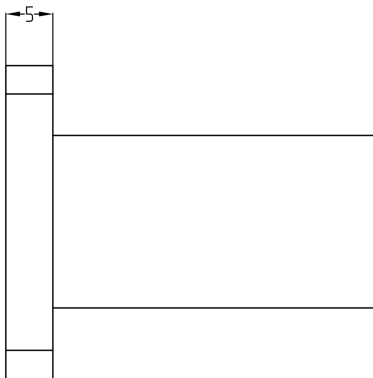
### Electrical

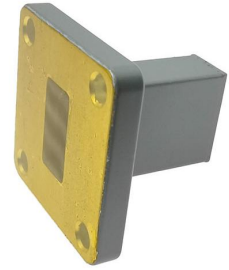
|                       |                 |
|-----------------------|-----------------|
| Frequency Range       | 11.9-18.0 GHz   |
| VSWR                  | 1.2 max         |
| Input Avg Power       | 20 Watts @ 25°C |
| Operating Temperature | -40°C ~ +70°C   |

### Mechanical

|                    |              |
|--------------------|--------------|
| Waveguide Size     | WR62(R140)   |
| Flange Type        | IEC: UBR140  |
| Waveguide Material | Aluminum     |
| Waveguide Finish   | Grey painted |
| Net Weight         | Approx 20g   |

### Dimensions(mm)





Typical Test Data

