

Waveguide Termination

WT62A



WR62, 11.9-18.0 GHz, 1.5 Watts, Square Cover Flange

Rev 1

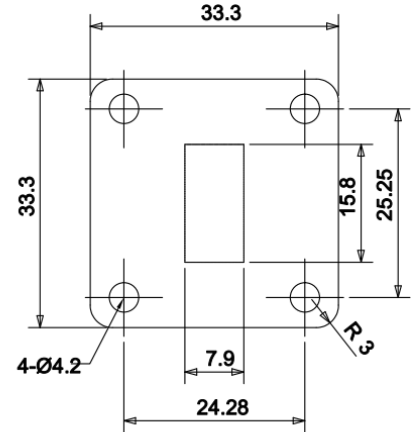
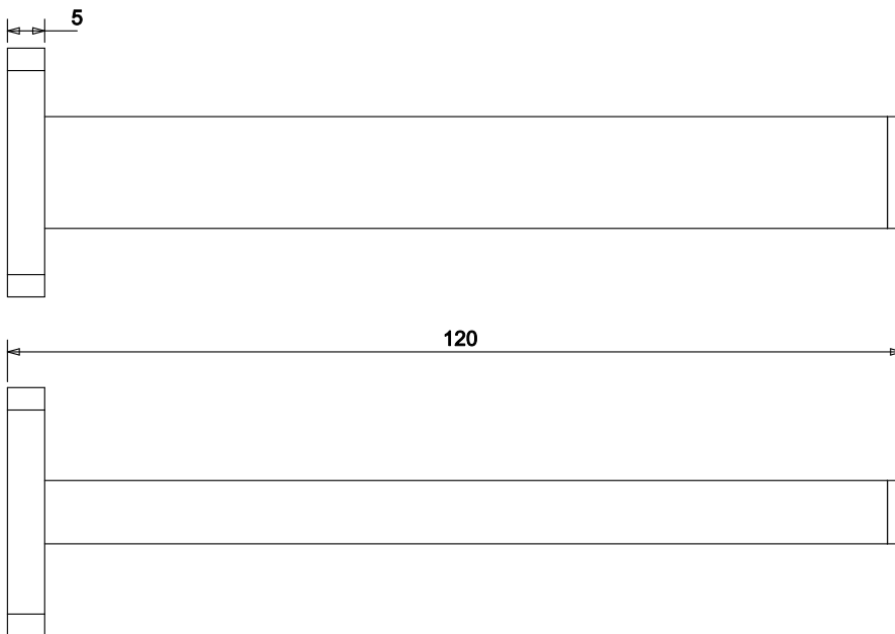
Electrical

Frequency Range	11.9-18.0 GHz
VSWR	1.03 max
Input Avg Power	1.5 Watts @ 25°C
Operating Temperature	-40°C ~ +70°C

Mechanical

Waveguide Size	WR62(R140)
Flange Type	IEC: UBR140
Waveguide Material	Aluminum
Waveguide Finish	Grey painted
Net Weight	Approx 35g

Dimensions(mm)





Waveguide Termination

WT62A

WR62, 11.9-18.0 GHz, 1.5 Watts, Square Cover Flange

Rev 1

Typical Test Data

