

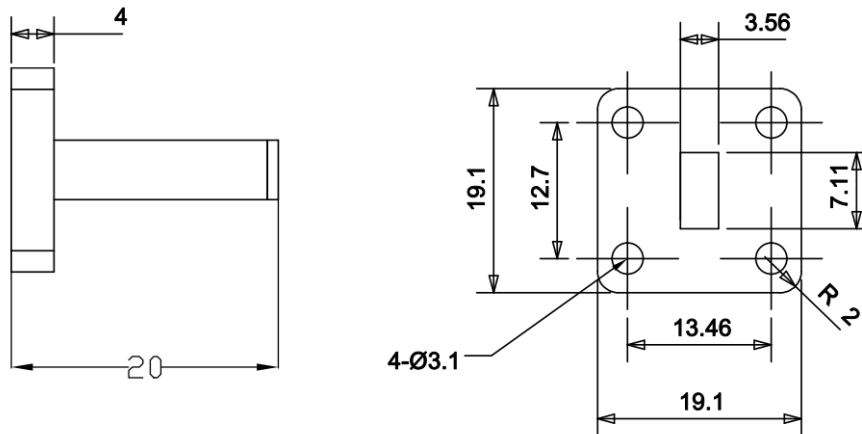
**Electrical**

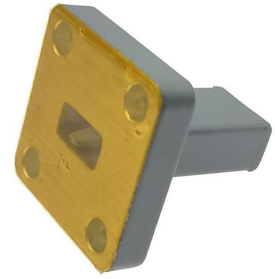
|                       |                 |
|-----------------------|-----------------|
| Frequency Range       | 26.3-40.0 GHz   |
| VSWR                  | 1.2 max         |
| Input Avg Power       | 15 Watts @ 25°C |
| Operating Temperature | -40°C ~ +70°C   |

**Mechanical**

|                    |              |
|--------------------|--------------|
| Waveguide Size     | WR28(R320)   |
| Flange Type        | IEC: UBR320  |
| Waveguide Material | Copper       |
| Waveguide Finish   | Grey painted |
| Net Weight         | Approx 15g   |

**Dimensions(mm)**





# Waveguide Termination

**WT28S**

**WR28, 26.3-40.0 GHz, 15 Watts, Square Cover Flange**

Rev 2

## Typical Test Data

