

Waveguide Termination

WT28G50

WR28, 26.3-40.0 GHz, 50 Watts, Square Grooved Flange



Rev 1

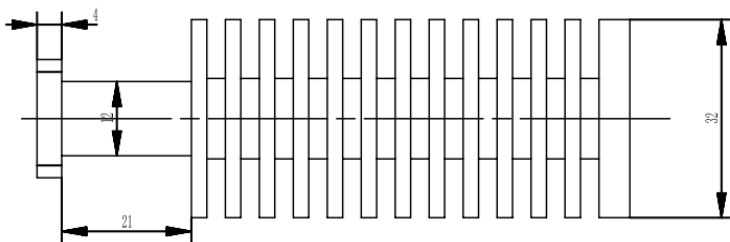
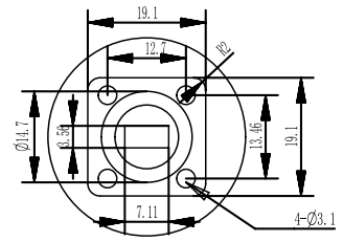
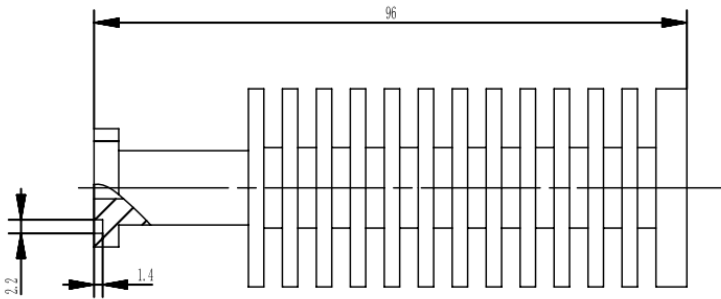
Electrical

Frequency Range	26.3-40.0 GHz
VSWR	1.2 max
Input Avg Power	50 Watts @ 25°C
Operating Temperature	-40°C~+70°C

Mechanical

Waveguide Size	WR28(R320)
Flange Type	IEC: PBR320
Waveguide Material	Aluminum
Waveguide Finish	Black painted
Heat Sink Material	Aluminum
Heat Sink Finish	Grey painted
Net Weight	95g

Dimensions(mm)





Typical Test Data

