



## 15 dBi Gain, 2.6-3.95 GHz, WR284 Standard Gain Horn with UDR32

### Flange

Rev 1

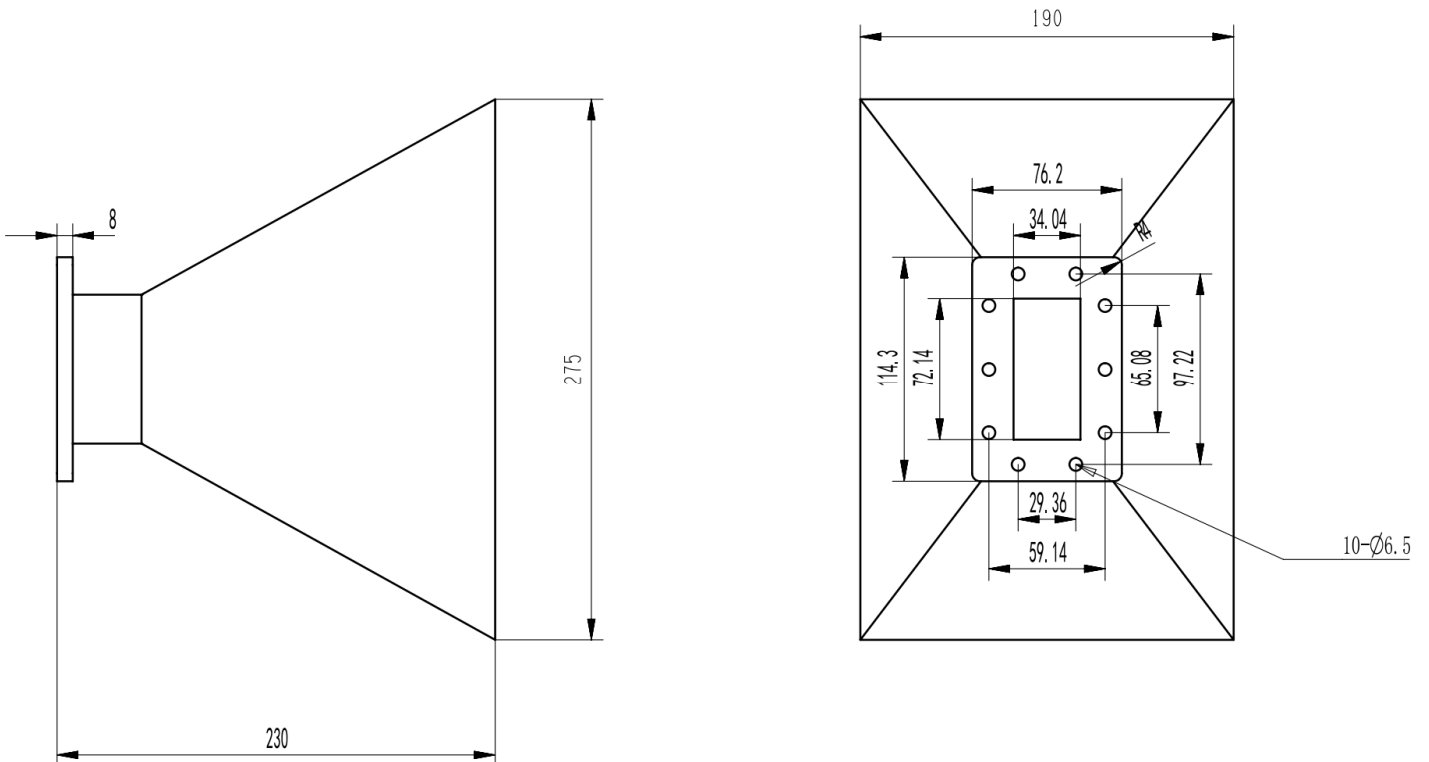
### Electrical

Frequency Range	2.6-3.95 GHz
Norminal Gain	15 dBi
Polarization	Linear
VSWR	1.2 max
3dB Beamwidth	H-Plane: 23.4~32.0 deg, E-Plane: 23.1~34.4 deg
Operating Temperature	-40°C~+70°C

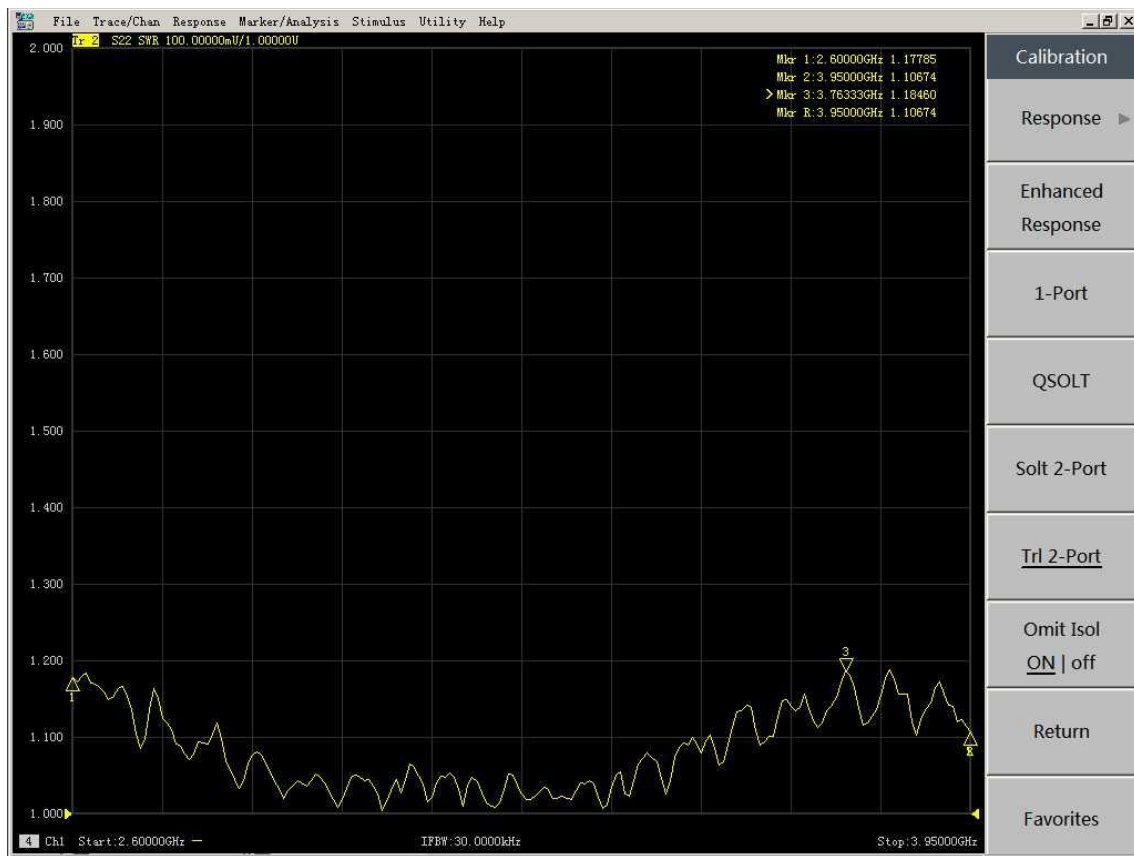
### Mechanical

Waveguide Size	WR284
Flange Type	UDR32 Rectangular Cover Flange
Body Material and Finish	Aluminum, Painted
Weight	785g

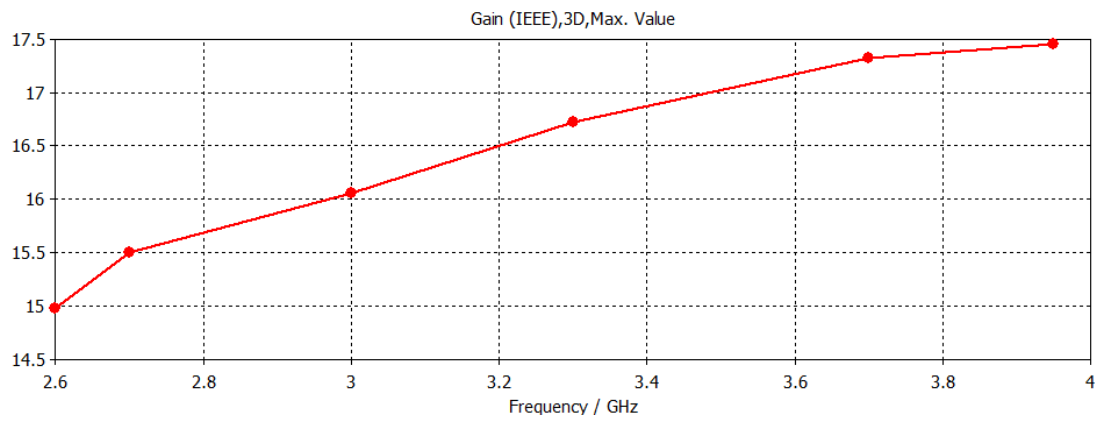
### Dimensions(mm)



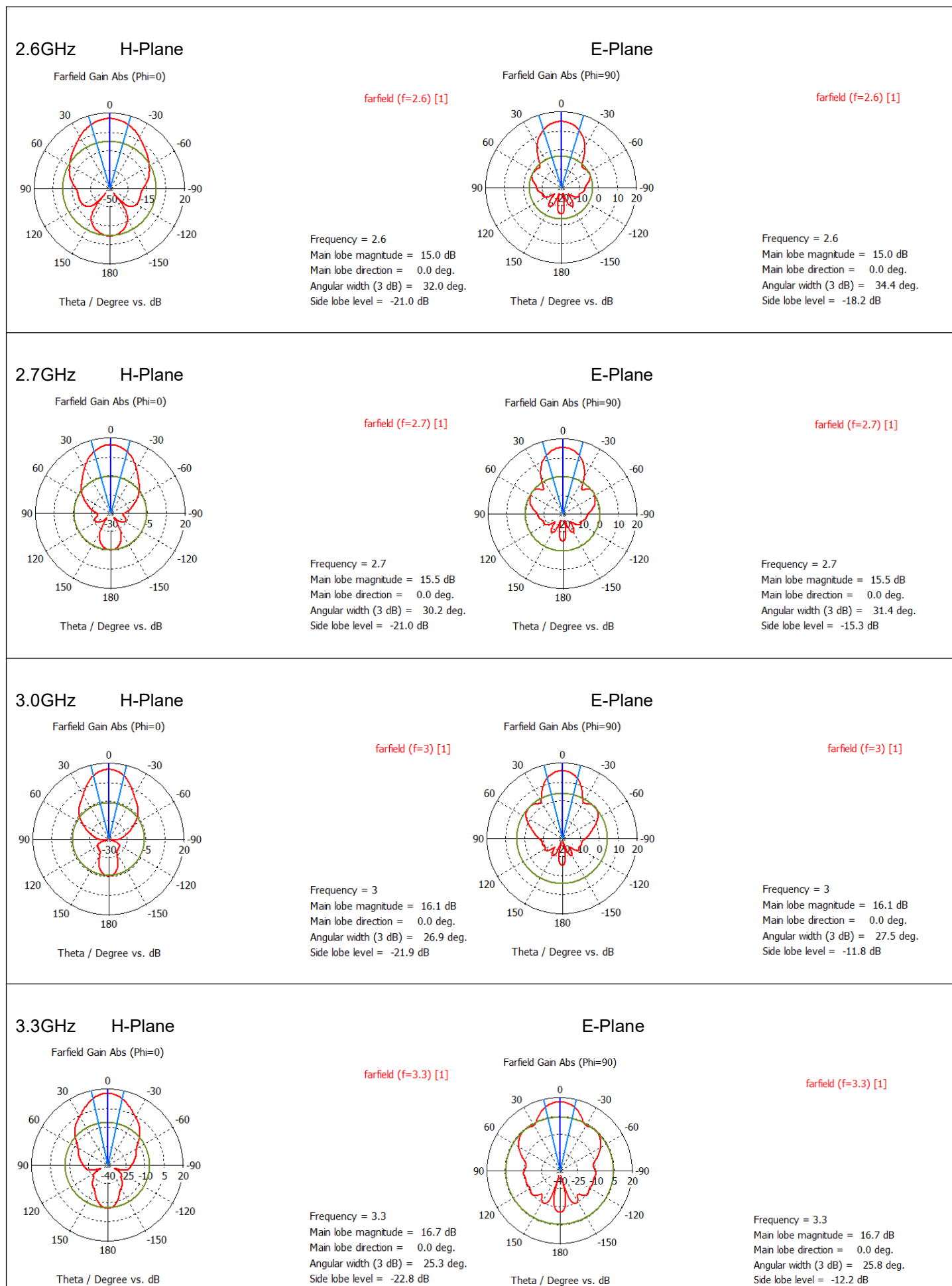
## Typical VSWR



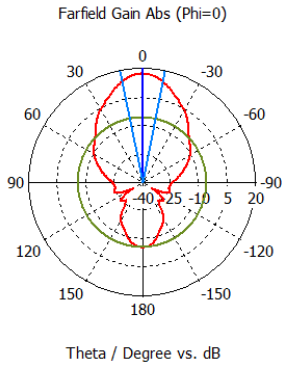
## Gain



# Simulated Antenna Patterns



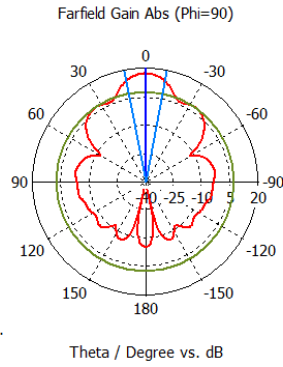
### 3.7GHz H-Plane



farfield (f=3.7) [1]

Frequency = 3.7  
 Main lobe magnitude = 17.3 dB  
 Main lobe direction = 0.0 deg.  
 Angular width (3 dB) = 23.0 deg.  
 Side lobe level = -23.1 dB

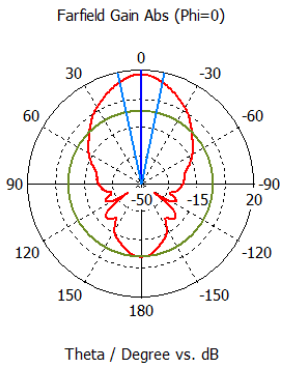
### E-Plane



farfield (f=3.7) [1]

Frequency = 3.7  
 Main lobe magnitude = 17.3 dB  
 Main lobe direction = 0.0 deg.  
 Angular width (3 dB) = 22.0 deg.  
 Side lobe level = -9.9 dB

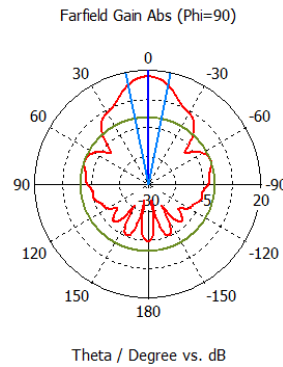
### 3.95GHz H-Plane



farfield (f=3.95) [1]

Frequency = 3.95  
 Main lobe magnitude = 17.5 dB  
 Main lobe direction = 0.0 deg.  
 Angular width (3 dB) = 23.4 deg.  
 Side lobe level = -22.4 dB

### E-Plane



farfield (f=3.95) [1]

Frequency = 3.95  
 Main lobe magnitude = 17.5 dB  
 Main lobe direction = 0.0 deg.  
 Angular width (3 dB) = 23.1 deg.  
 Side lobe level = -17.7 dB