

**WRD650 to SMA Female Waveguide to Coaxial Adapter  
Square Cover Flange, Right Angle**

Rev 5

**Electrical**

Frequency Range	6.5-18 GHz
VSWR	1.25 max
Average Power	50 Watts

**Configuration**

Waveguide Size	WRD650
Flange	Square Cover, FPWRD650
Coax Connector	SMA Female
Body Geometry	Right Angle

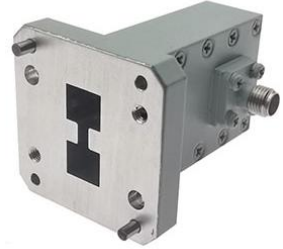
**Mechanical & Environmental**

Waveguide Body	Aluminum, conductive oxidation, anti-corrosive paint
Connector Body	Passivated stainless steel
Center Contact	Gold plated beryllium copper
Operating Temperature	-40°C to +85°C
Connector Interface	MIL-STD-348
RoHS	Compliant under exemptions 6 (b) or 6 (c)
Net Weight	Approx 65g

**Note**

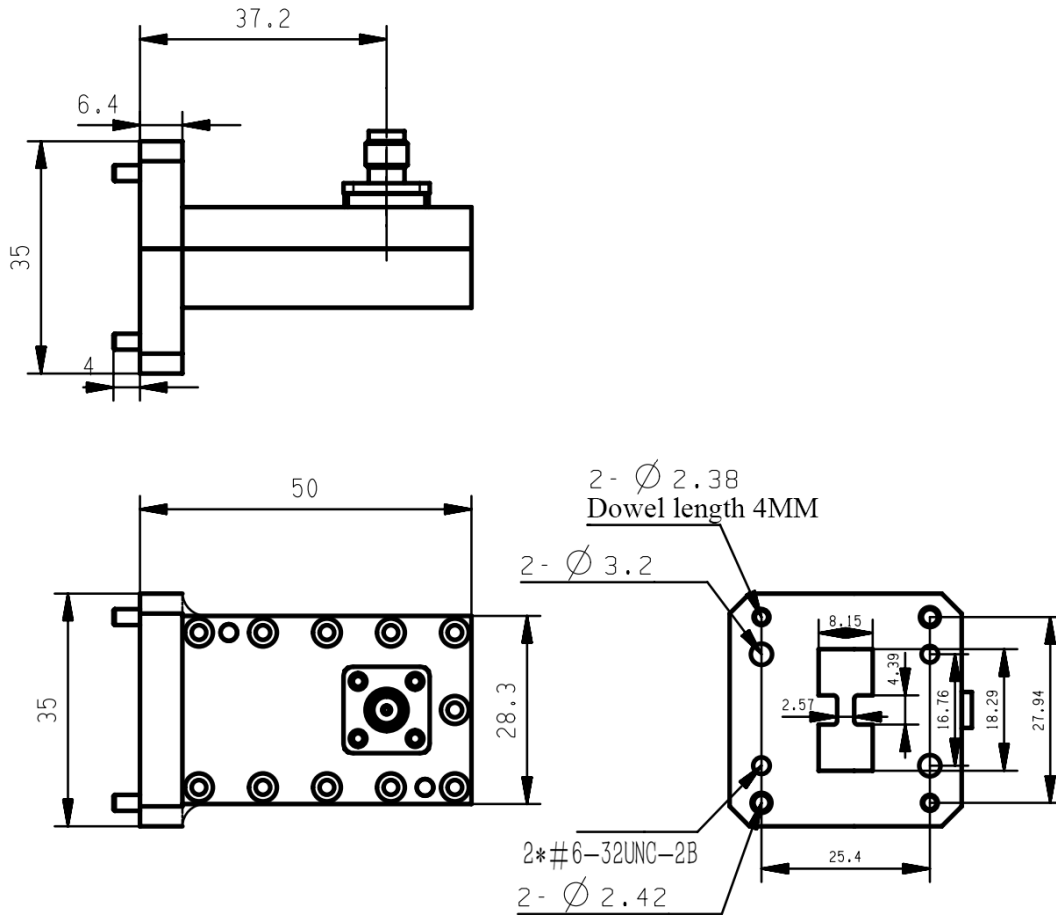
\* Paint in grey or black by default, other colors available.

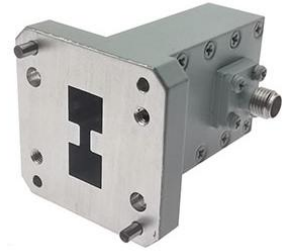
WRD650 to SMA Female Waveguide to Coaxial Adapter  
Square Cover Flange, Right Angle



Rev 5

Dimensions(mm)

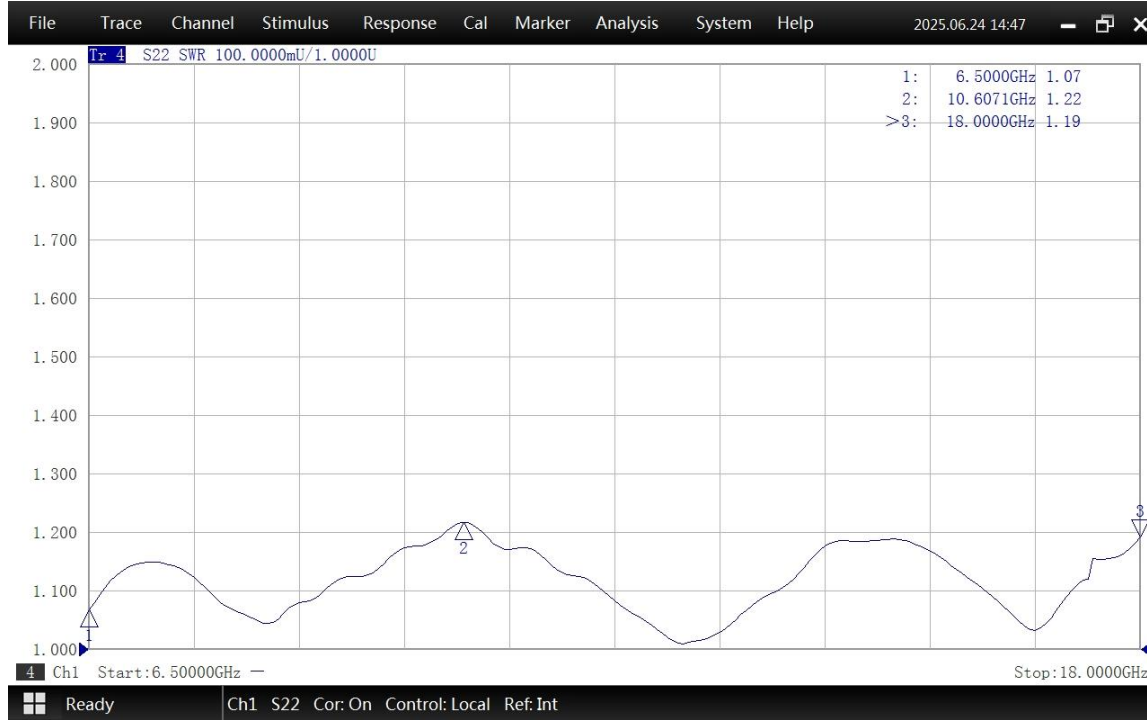




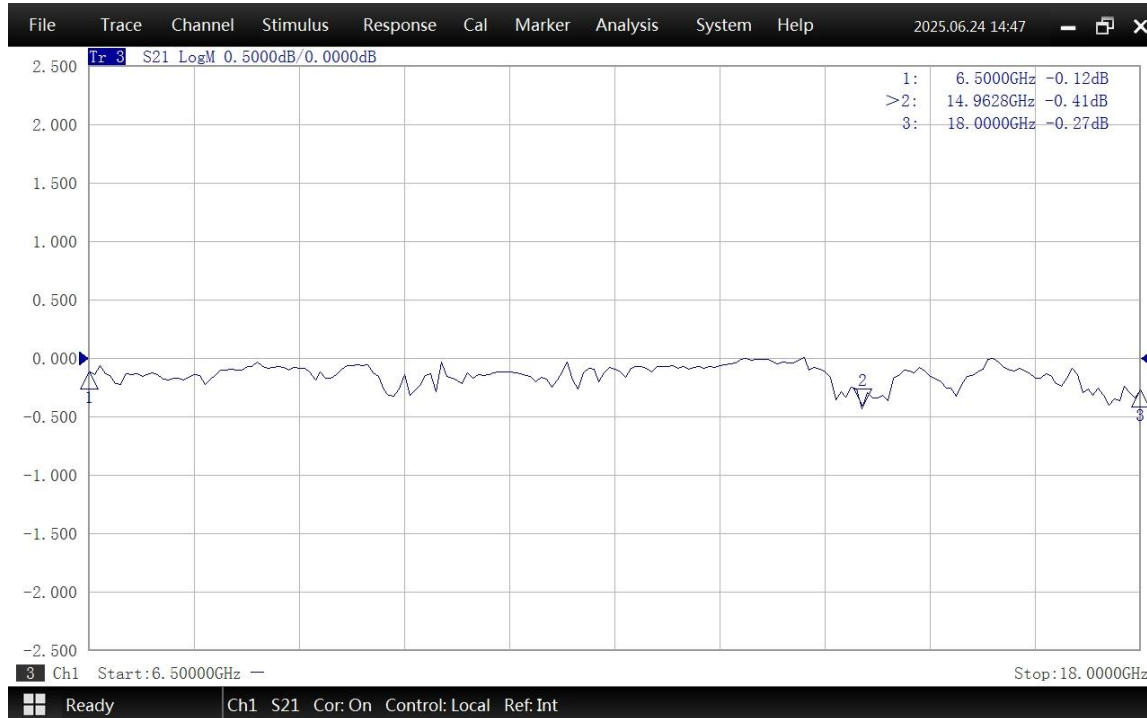
**WRD650 to SMA Female Waveguide to Coaxial Adapter  
Square Cover Flange, Right Angle**

Rev 5

**Typical Test Data at 25°C**



VSWR



Insertion Loss\*

\* In Insertion Loss (IL) testing, adapters are measured back-to-back. To obtain the loss of a single adapter, divide the measured value by two.