


**WRD500 to SMA Female Waveguide to Coaxial Adapter  
Rectangular Cover Flange, Right Angle**

Rev 5

**Electrical**

Frequency Range	5-18 GHz
VSWR	1.3 max
Average Power	50 Watts

**Configuration**

Waveguide Size	WRD500
Flange	Rectangular Cover, FPWRD500
Coax Connector	SMA Female
Body Geometry	Right Angle

**Mechanical & Environmental**

Waveguide Body	Aluminum, conductive oxidation, anti-corrosive paint
Connector Body	Passivated stainless steel
Center Contact	Gold plated beryllium copper
Operating Temperature	-40°C to +85°C
Connector Interface	MIL-STD-348
RoHS	Compliant under exemptions 6 (b) or 6 (c)
Net Weight	Approx 65g

**Note**

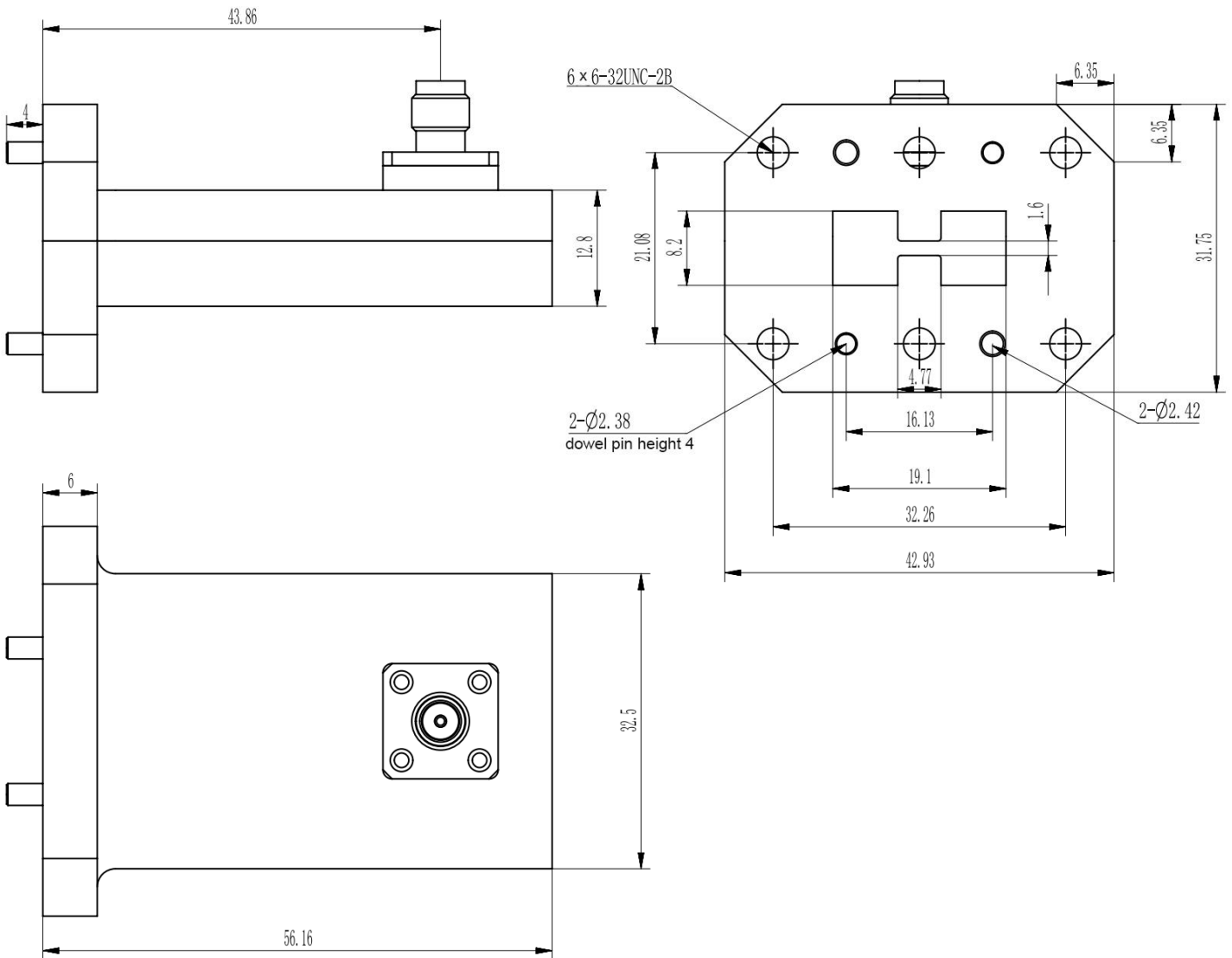
\* Paint in grey or black by default, other colors available.



**WRD500 to SMA Female Waveguide to Coaxial Adapter  
Rectangular Cover Flange, Right Angle**

Rev 5

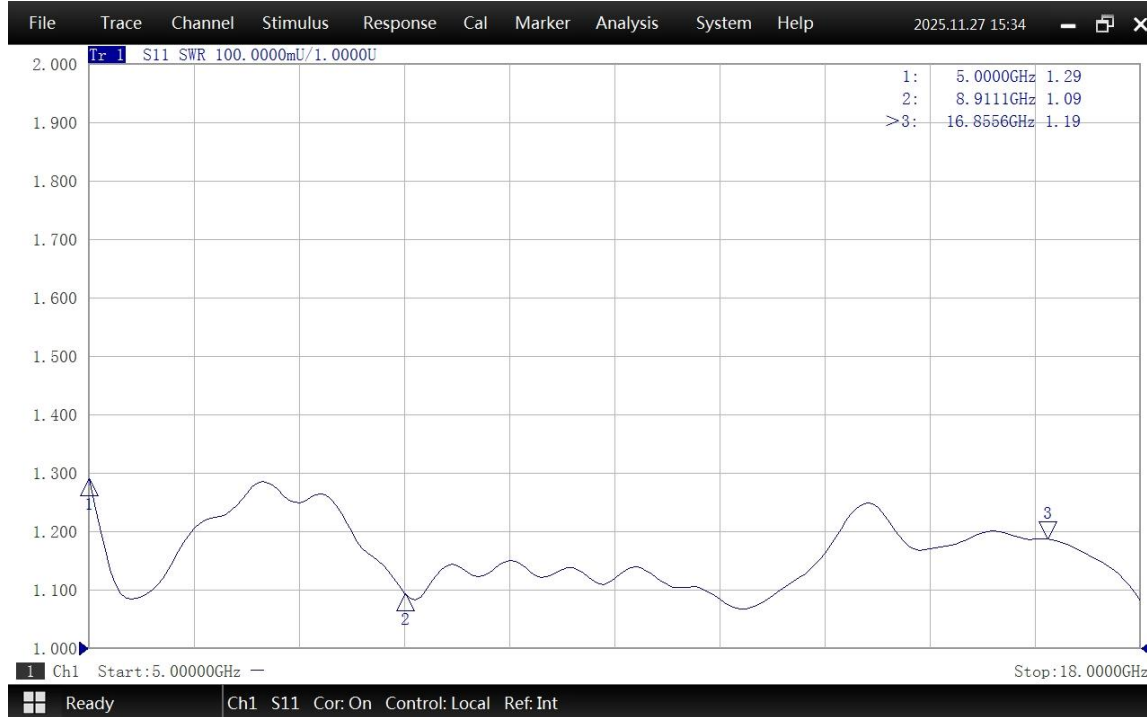
**Dimensions(mm)**



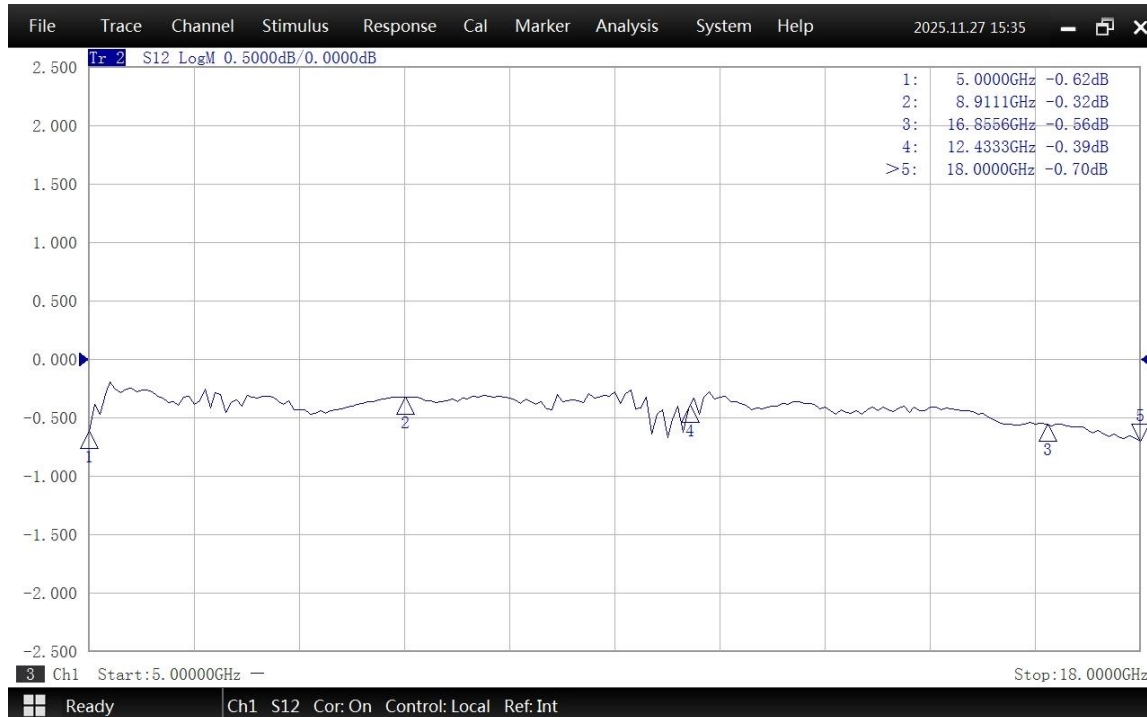


## WRD500 to SMA Female Waveguide to Coaxial Adapter Rectangular Cover Flange, Right Angle

### Typical Test Data at 25°C



VSWR



Insertion Loss\*

\* In Insertion Loss (IL) testing, adapters are measured back-to-back. To obtain the loss of a single adapter, divide the measured value by two.