



**WRD500 to N Female Waveguide to Coaxial Adapter  
Rectangular Cover Flange, Right Angle**

Rev 5

**Electrical**

|                 |           |
|-----------------|-----------|
| Frequency Range | 5-18 GHz  |
| VSWR            | 1.3 max   |
| Average Power   | 150 Watts |

**Configuration**

|                |                             |
|----------------|-----------------------------|
| Waveguide Size | WRD500                      |
| Flange         | Rectangular Cover, FPWRD500 |
| Coax Connector | N Female                    |
| Body Geometry  | Right Angle                 |

**Mechanical & Environmental**

|                       |  |
|-----------------------|--|
| Waveguide Body        | Aluminum, conductive oxidation, anti-corrosive paint |
| Connector Body        | Passivated stainless steel                           |
| Center Contact        | Gold plated beryllium copper                         |
| Operating Temperature | -40°C to +85°C                                       |
| Connector Interface   | MIL-STD-348  |
| RoHS                  | Compliant under exemptions 6 (b) or 6 (c)            |
| Net Weight            | Approx 85g   |

**Note**

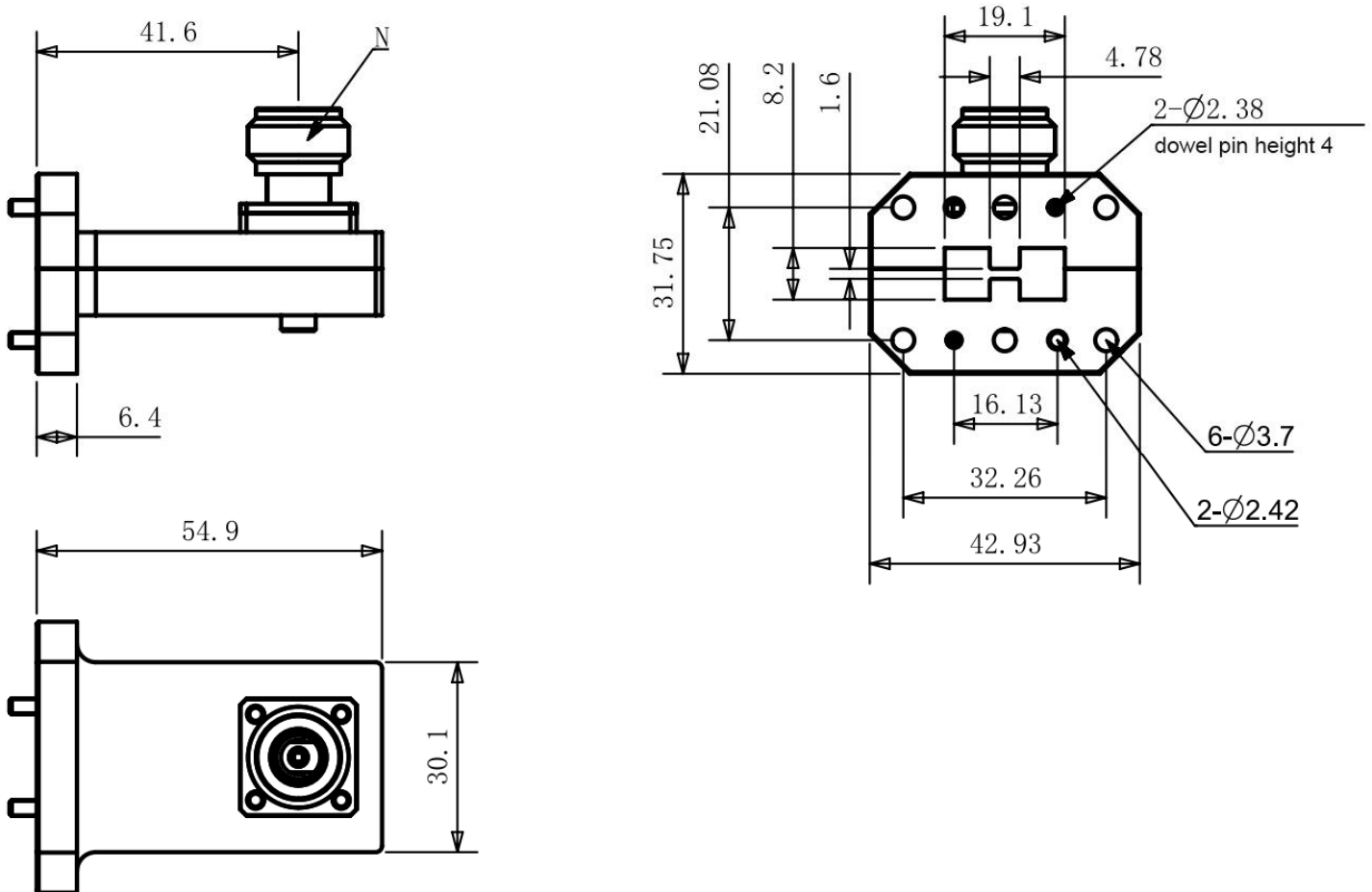
\* Paint in grey or black by default, other colors available.

**WRD500 to N Female Waveguide to Coaxial Adapter  
Rectangular Cover Flange, Right Angle**



Rev 5

**Dimensions(mm)**

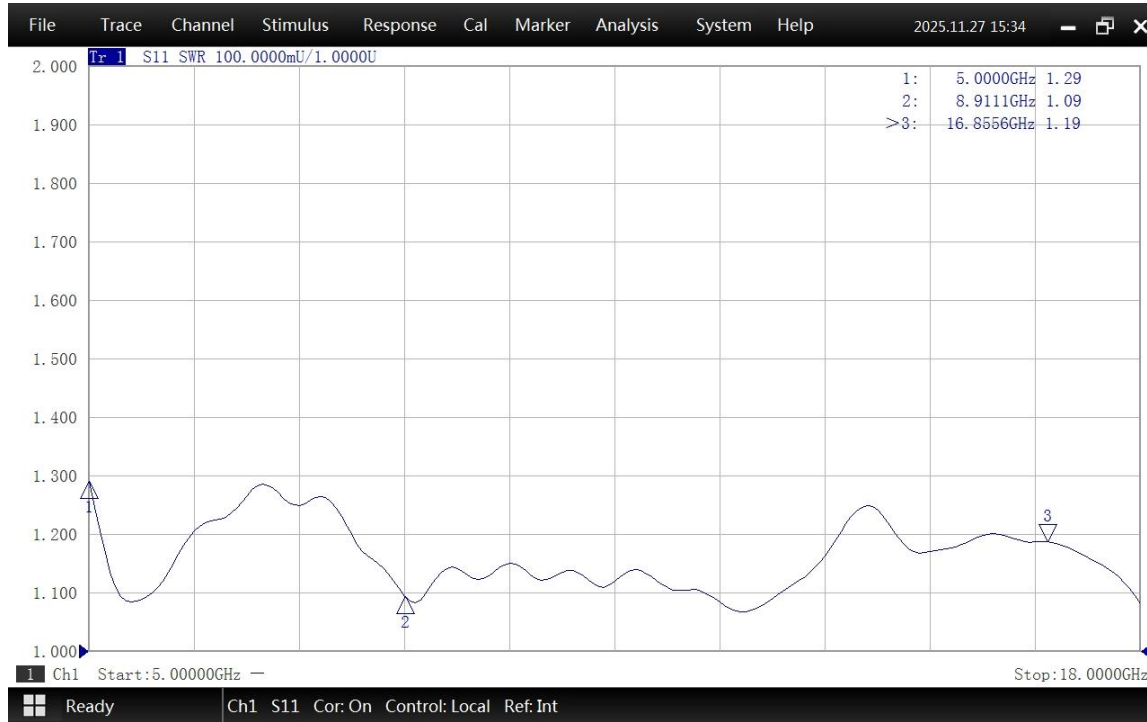




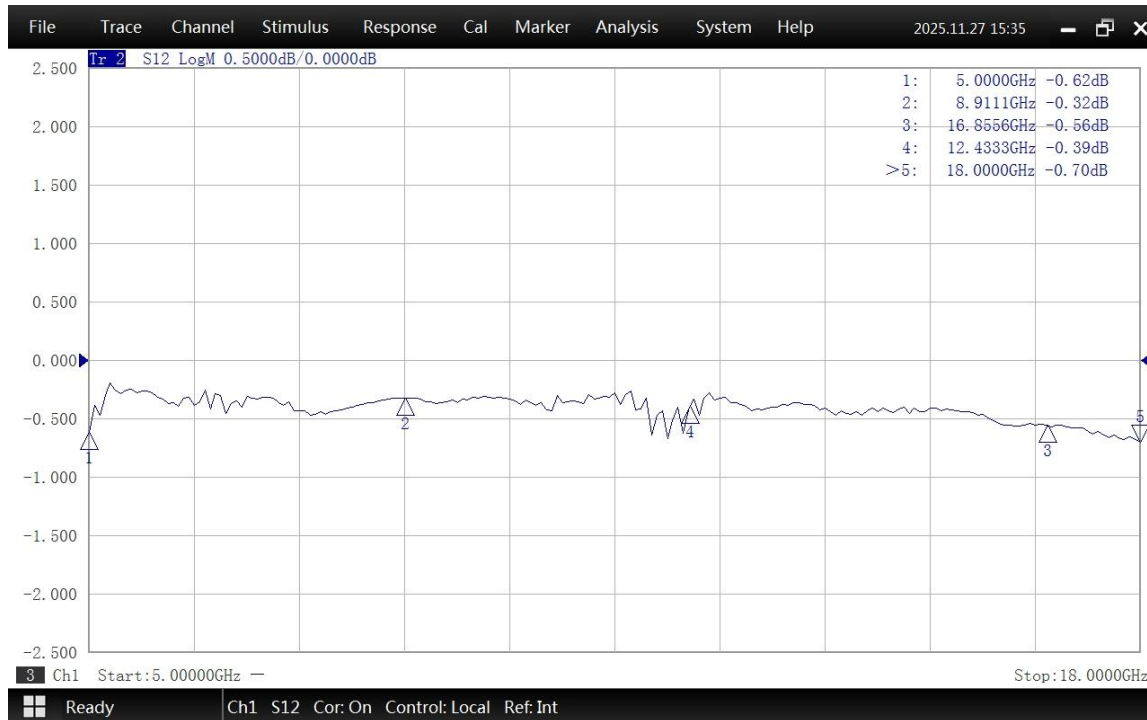
**WRD500 to N Female Waveguide to Coaxial Adapter  
Rectangular Cover Flange, Right Angle**

Rev 5

**Typical Test Data at 25°C**



VSWR



Insertion Loss\*

\* In Insertion Loss (IL) testing, adapters are measured back-to-back. To obtain the loss of a single adapter, divide the measured value by two.