

WRD180 to 2.92mm Female Waveguide to Coaxial Adapter Square Cover Flange, End Launch

Rev 5

Electrical

Frequency Range	18-40 GHz
VSWR	1.4 max
Average Power	20 Watts

Configuration

Waveguide Size	WRD180
Flange	Square Cover, FPWRD180
Coax Connector	2.92mm Female
Body Geometry	End Launch

Mechanical & Environmental

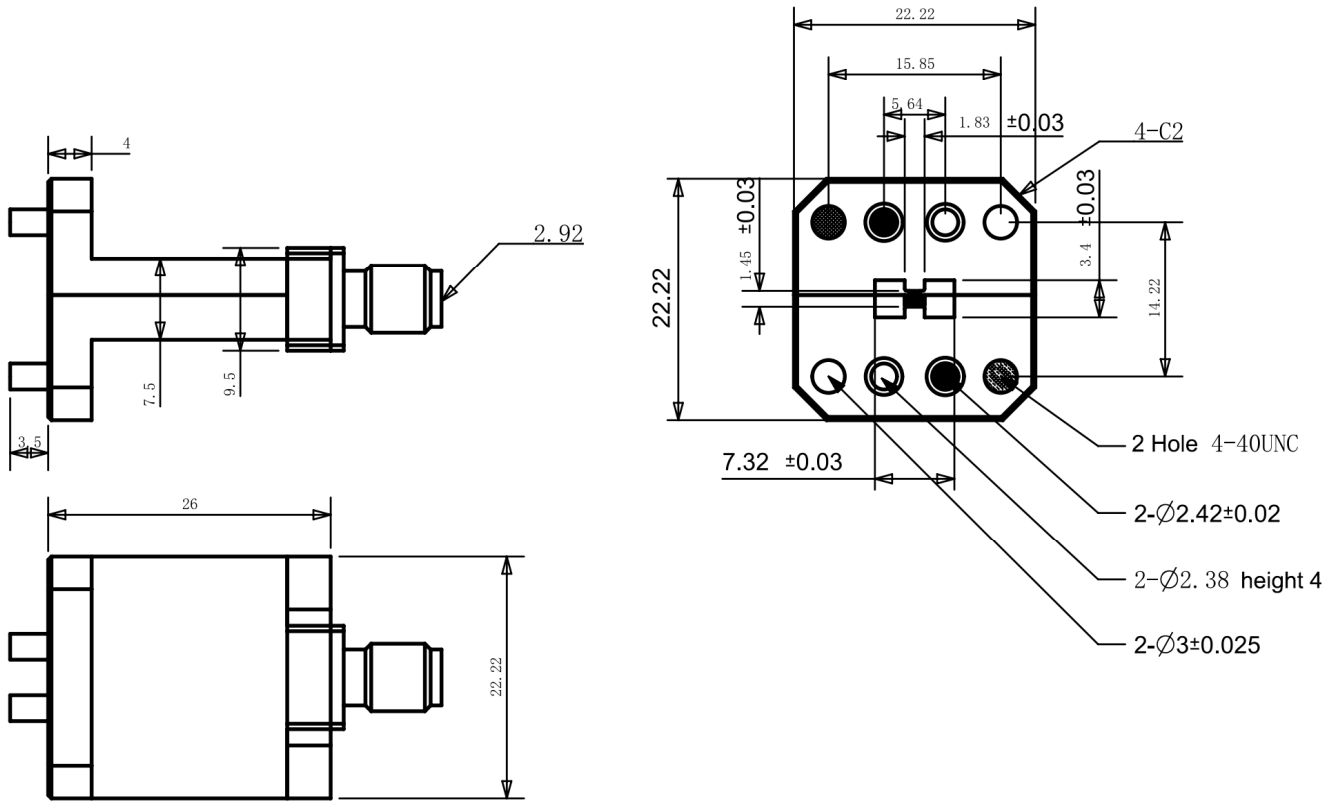
Waveguide Body	Aluminum, conductive oxidation, anti-corrosive paint
Connector Body	Passivated stainless steel
Center Contact	Gold plated beryllium copper
Operating Temperature	-40°C to +85°C
Connector Interface	MIL-STD-348
RoHS	Compliant under exemptions 6 (b) or 6 (c)
Net Weight	Approx 20g

Note

* Paint in grey or black by default, other colors available.

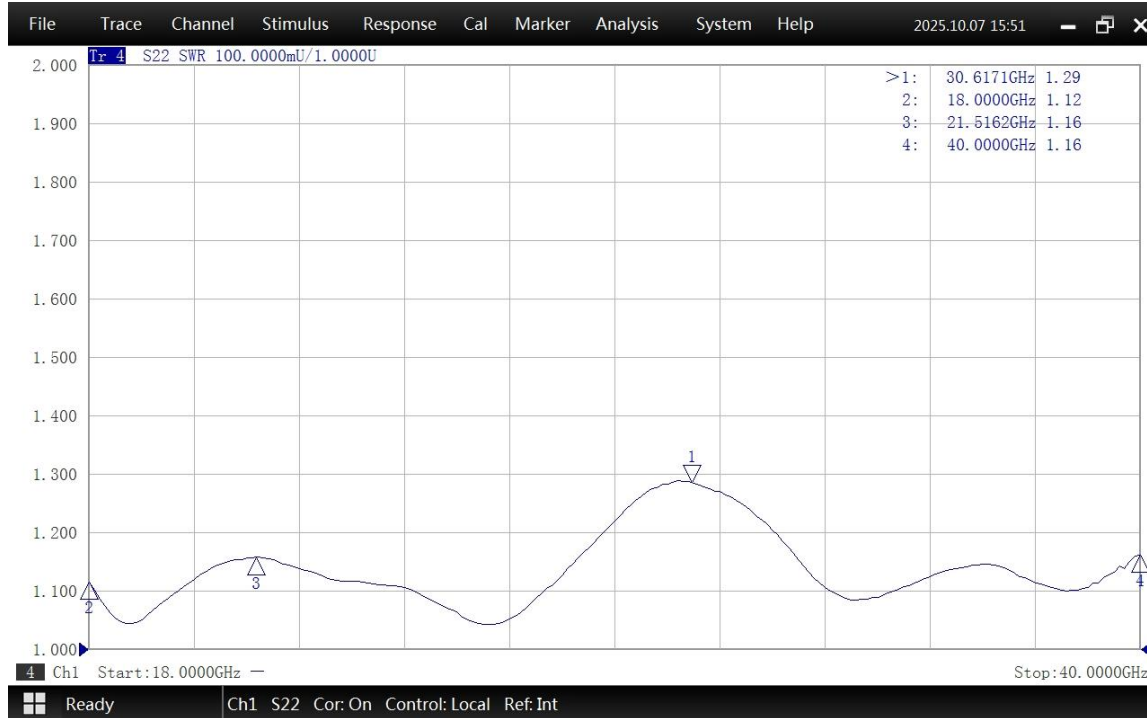
WRD180 to 2.92mm Female Waveguide to Coaxial Adapter
 Square Cover Flange, End Launch

Dimensions(mm)

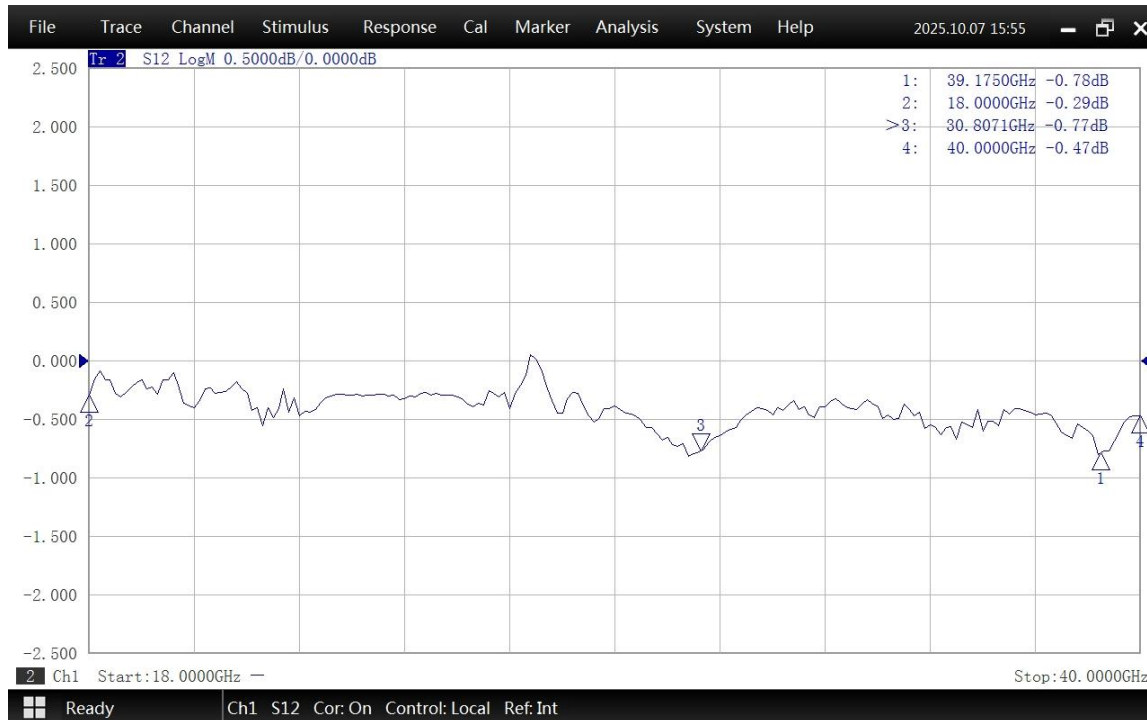


**WRD180 to 2.92mm Female Waveguide to Coaxial Adapter
Square Cover Flange, End Launch**

Typical Test Data at 25°C



VSWR



Insertion Loss*

* In Insertion Loss (IL) testing, adapters are measured back-to-back. To obtain the loss of a single adapter, divide the measured value by two.