

**WR975 to N Female Waveguide to Coaxial Adapter  
UDR9 Flange, Right Angle**

Rev 5

**Electrical**

Frequency Range	0.76-1.15 GHz
VSWR	1.2 max

**Configuration**

Waveguide Size	IEC	R9
	EIA	WR975
Flange	IEC	UDR9
	North America	CPR975F
Coax Connector	N Female	
Body Geometry	Right Angle	

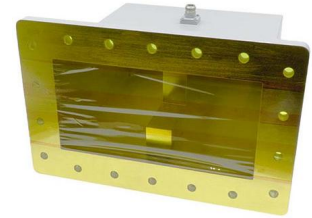
**Mechanical & Environmental**

Waveguide Body	Aluminum, conductive oxidation, anti-corrosive paint
Connector Body	Passivated stainless steel
Center Contact	Gold plated beryllium copper
Operating Temperature	-40°C to +85°C
Connector Interface	MIL-STD-348
RoHS	Compliant under exemptions 6 (b) or 6 (c)
Net Weight	Approx 6kg

**Note**

\* Flange size may not be 100% identical with the above listed standards, but are compatible. Refer to the next page for comparison table.

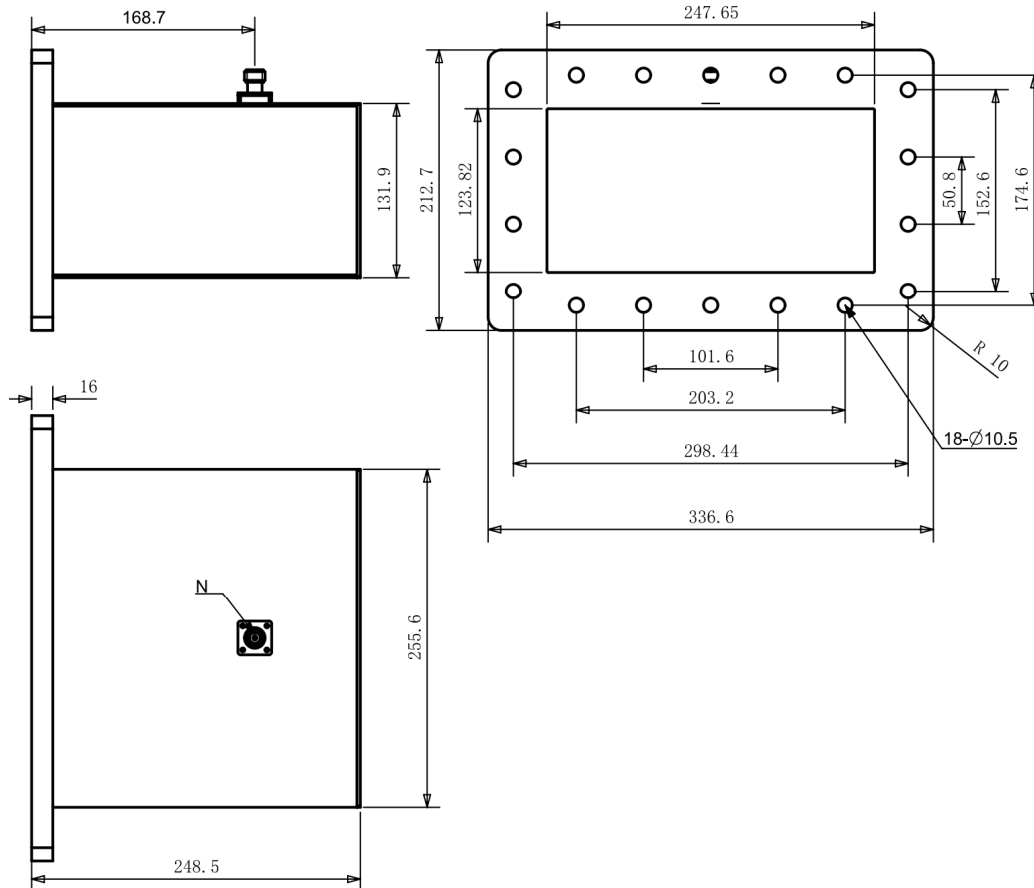
\* Paint in grey or black by default, other colors available.



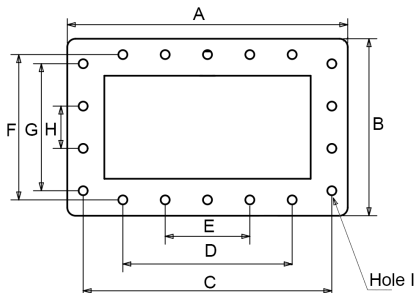
**WR975 to N Female Waveguide to Coaxial Adapter  
UDR9 Flange, Right Angle**

Rev 5

**Dimensions(mm)**

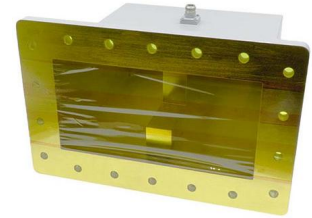


**Flange Comparison (mm)**



\* The purpose of this comparison is to provide a quick reference of different flange standards. Great care has been given, nevertheless there might be a few mistakes.  
\* Please check the flange compatibility before ordering. Customized flanges are available.

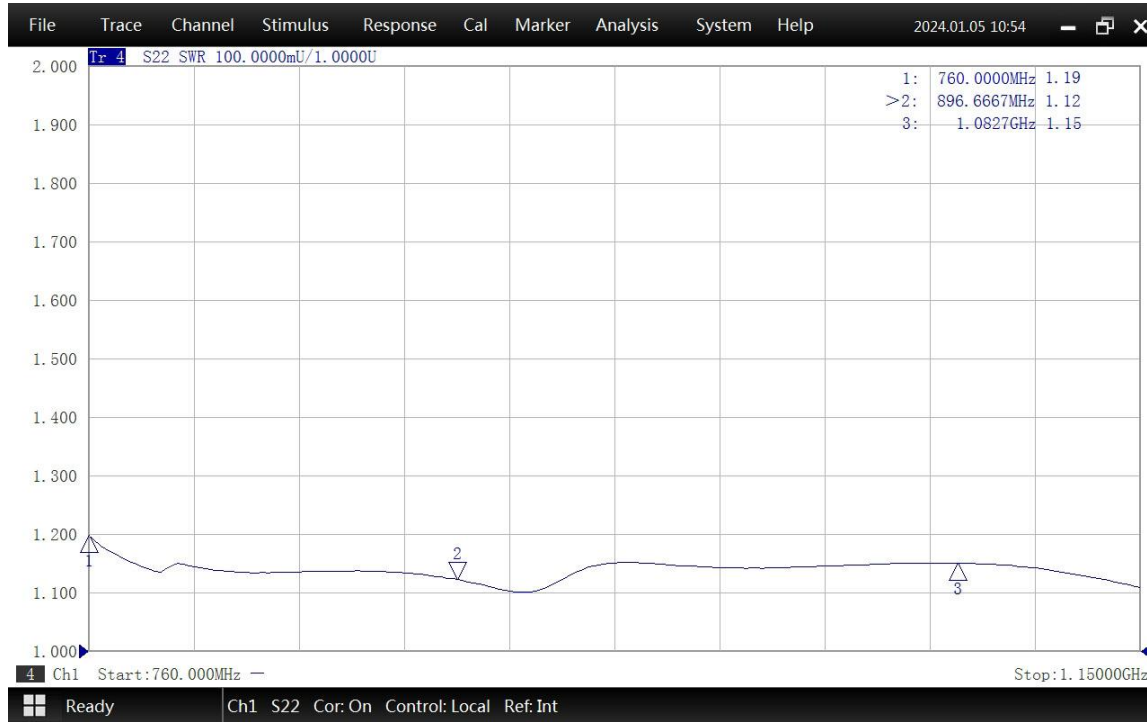
WG SIZE	CONFORMING STANDARD	A	B	C	D	E	F	G	H	I
WR975	RF ONE:AWR975N	336.6	212.7	298.44	203.2	101.6	174.6	152.6	50.8	10.5
	IEC60154:UDR9	336.55	212.73	298.44	203.2	101.6	174.6	152.6	50.8	10.4
	USA:CPR 975F	336.55	212.73	298.44	203.2	101.6	174.6	152.6	50.8	10.3



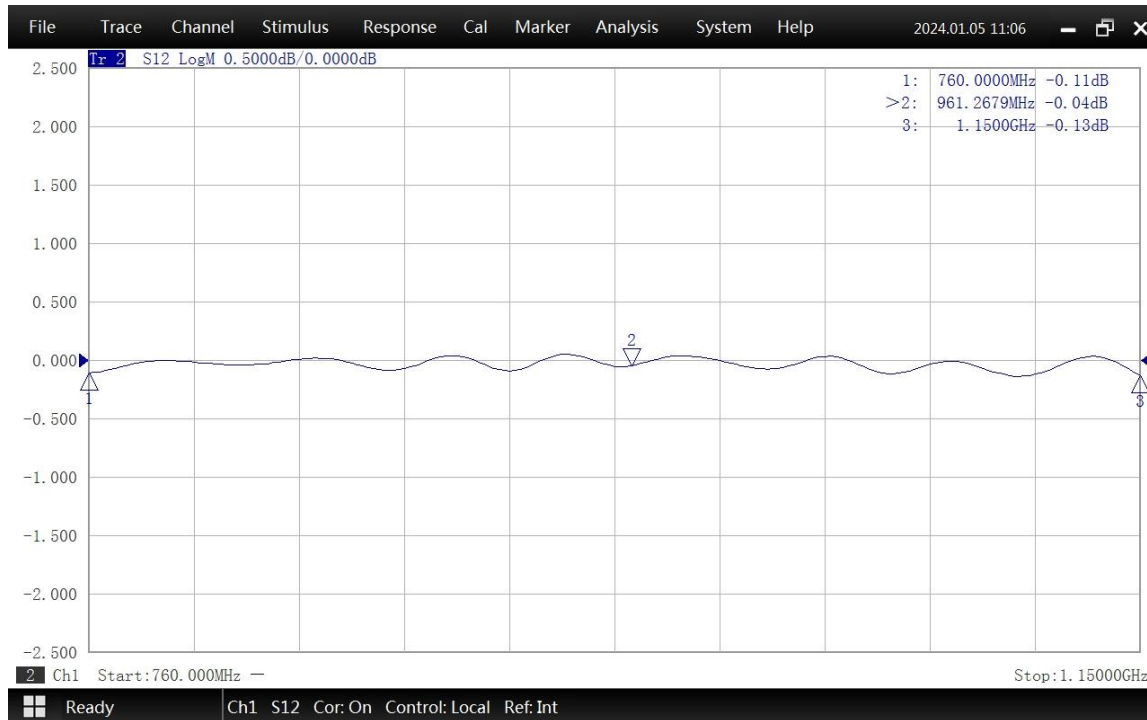
**WR975 to N Female Waveguide to Coaxial Adapter  
UDR9 Flange, Right Angle**

Rev 5

**Typical Test Data at 25°C**



VSWR



Insertion Loss\*

\* In Insertion Loss (IL) testing, adapters are measured back-to-back. To obtain the loss of a single adapter, divide the measured value by two.