

**WR90 to SMA Female Waveguide to Coaxial Adapter
PDR100 Flange, Right Angle**


Rev 5

Electrical

Frequency Range	8.2-12.5 GHz
VSWR	1.2 max

Configuration

Waveguide Size	IEC	R100
	EIA	WR90
Flange	IEC	PDR100
	North America	Al alloy :M3922/52-044(UG1361/U) Cu alloy:M3922/52-043(UG1360/U)
Coax Connector	SMA Female	
Body Geometry	Right Angle	

Mechanical & Environmental

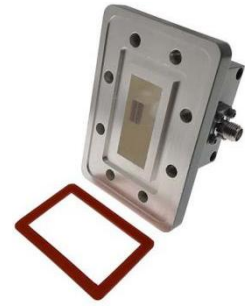
Waveguide Body	Aluminum, conductive oxidation, anti-corrosive paint
Connector Body	Passivated stainless steel
Center Contact	Gold plated beryllium copper
Operating Temperature	-40°C to +85°C
Connector Interface	MIL-STD-348
RoHS	Compliant under exemptions 6 (b) or 6 (c)
Net Weight	Approx 61g

Note

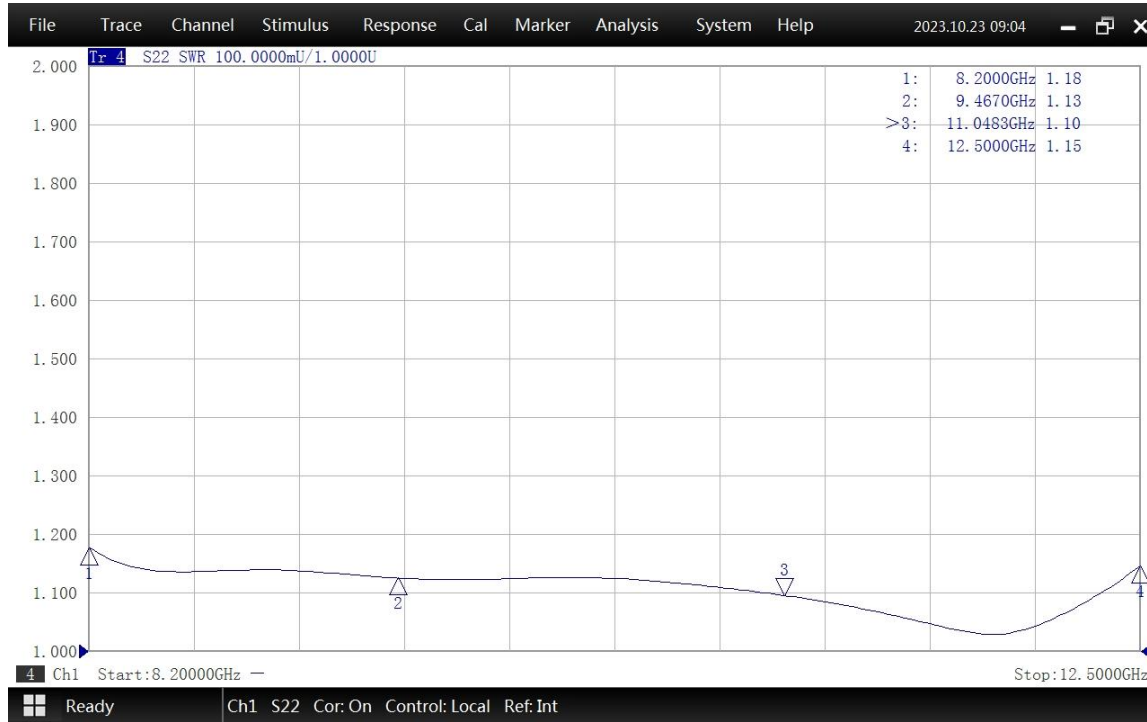
* Flange size may not be 100% identical with the above listed standards, but are compatible. Refer to the next page for comparison table.

* Paint in grey or black by default, other colors available.

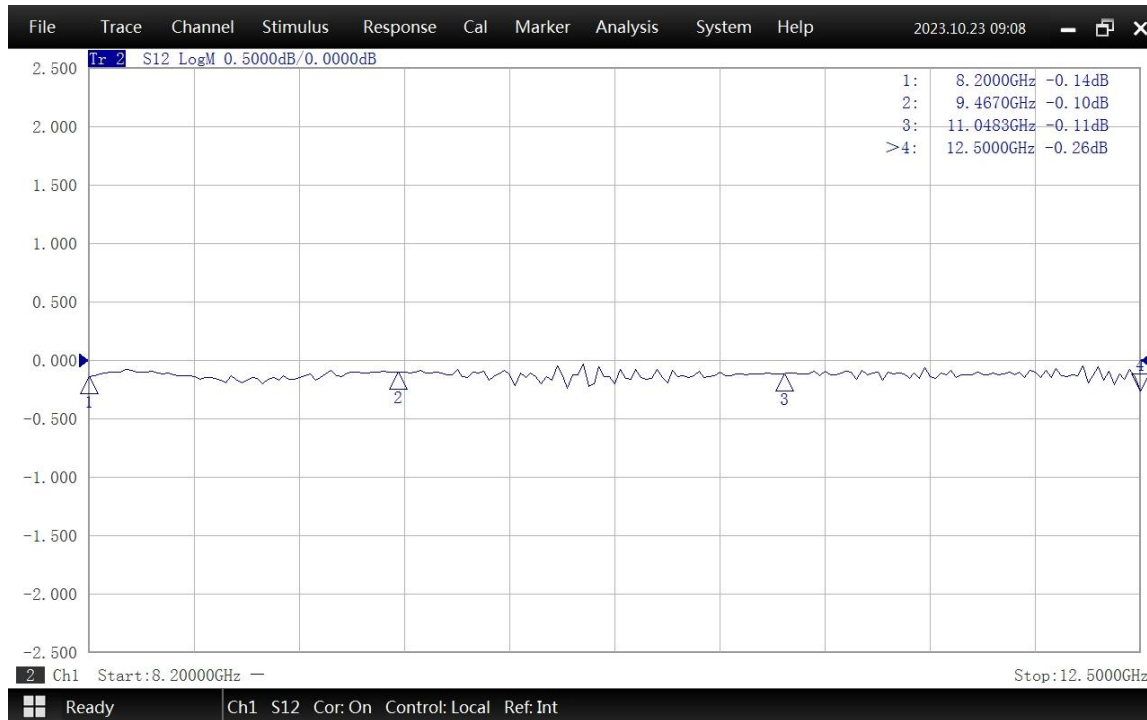
**WR90 to SMA Female Waveguide to Coaxial Adapter
PDR100 Flange, Right Angle**



Typical Test Data at 25°C



VSWR



Insertion Loss*

* In Insertion Loss (IL) testing, adapters are measured back-to-back. To obtain the loss of a single adapter, divide the measured value by two.