



**WR51 to SMA Female Waveguide to Coaxial Adapter
UBR180 Flange, Right Angle**

Rev 5

Electrical

Frequency Range	14.5-22 GHz
VSWR	1.2 max

Configuration

Waveguide Size	IEC	R180
	EIA	WR51
Flange	UBR180	
Coax Connector	SMA Female	
Body Geometry	Right Angle	

Mechanical & Environmental

Waveguide Body	Aluminum, conductive oxidation, anti-corrosive paint
Connector Body	Passivated stainless steel
Center Contact	Gold plated beryllium copper
Operating Temperature	-40°C to +85°C
Connector Interface	MIL-STD-348
RoHS	Compliant under exemptions 6 (b) or 6 (c)
Net Weight	Approx 40g

Note

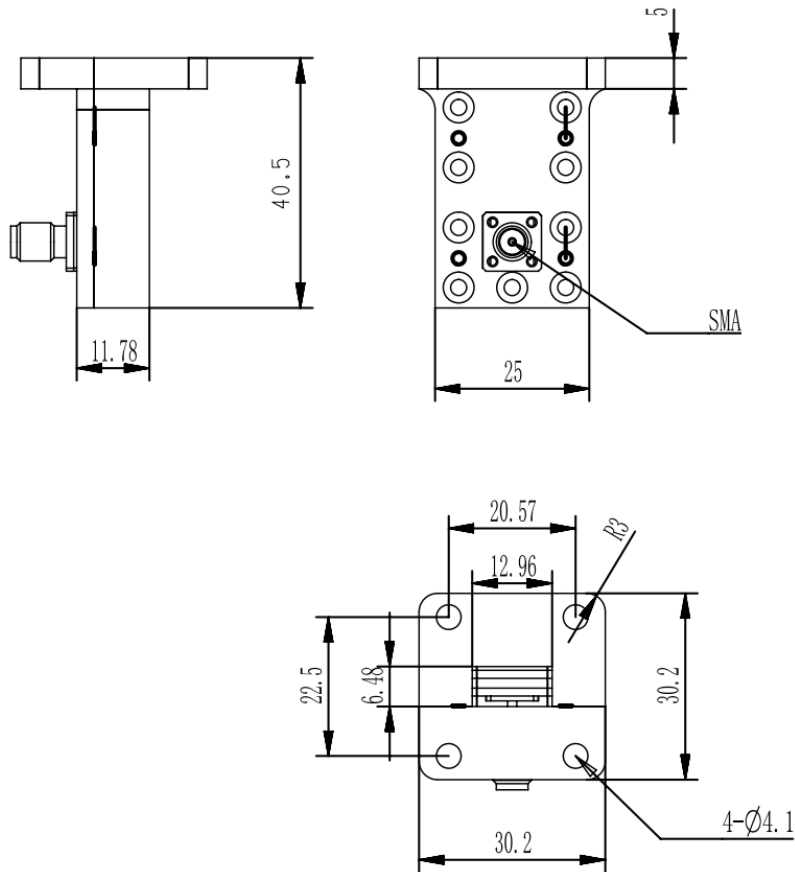
* Flange size may not be 100% identical with the above listed standards, but are compatible. Refer to the next page for comparison table.

* Paint in grey or black by default, other colors available.

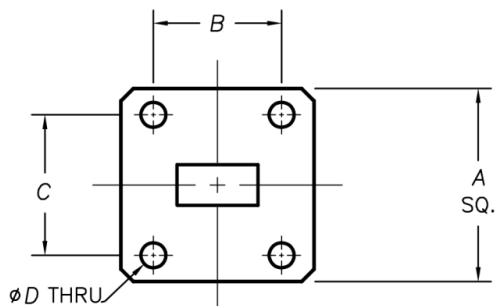
**WR51 to SMA Female Waveguide to Coaxial Adapter
UBR180 Flange, Right Angle**



Dimensions(mm)



Flange Comparison (mm)



* The purpose of this comparison is to provide a quick reference of different flange standards. Great care has been given, nevertheless there might be a few mistakes.

* Please check the flange compatibility before ordering. Customized flanges are available.

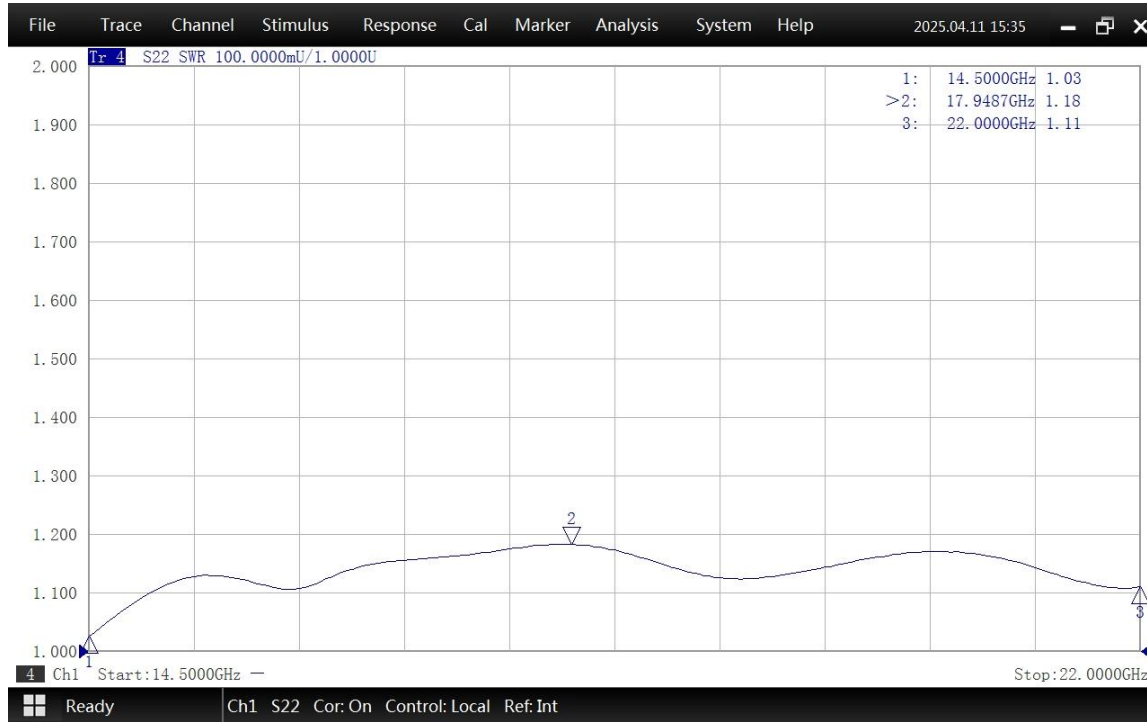
WG SIZE	CONFORMING STANDARD	A	B	C	D
WR51	RF ONE:AWR51SMA	30.2	20.57	22.5	4.1
	IEC60154:UBR180	30.10	20.57	22.5	4.00



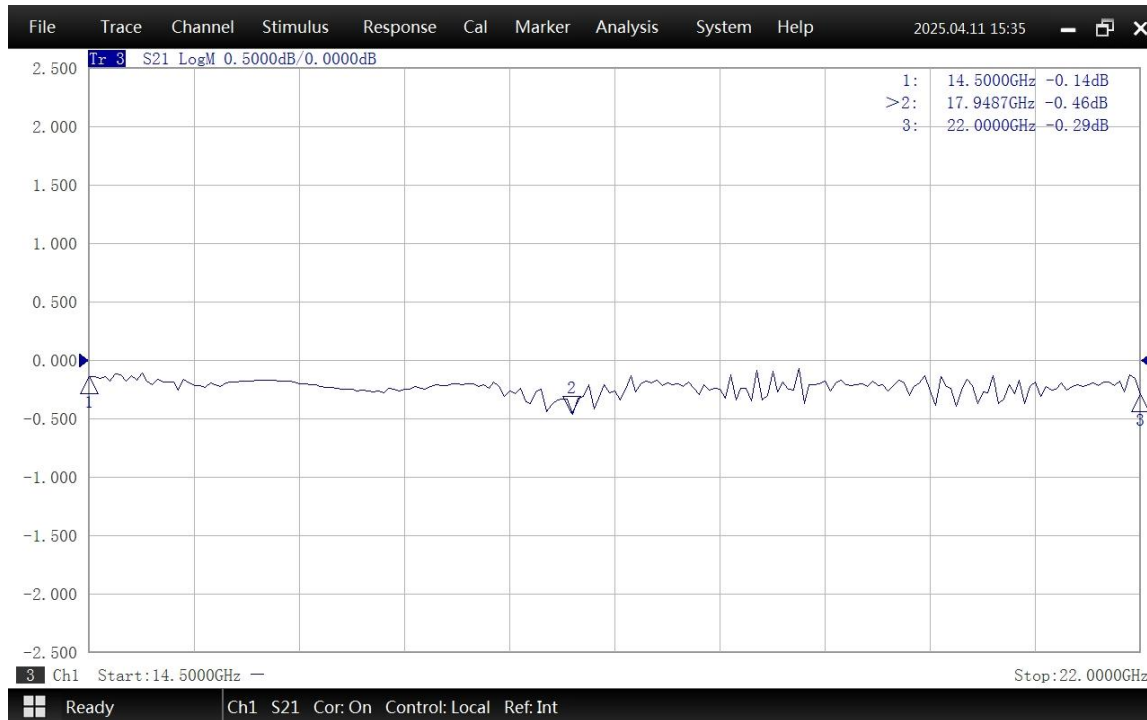
WR51 to SMA Female Waveguide to Coaxial Adapter UBR180 Flange, Right Angle

Rev 5

Typical Test Data at 25°C



VSWR



Insertion Loss*

* In Insertion Loss (IL) testing, adapters are measured back-to-back. To obtain the loss of a single adapter, divide the measured value by two.