



**WR28 to 2.92mm Female Waveguide to Coaxial Adapter
UBR320 Flange, End-launch**

Rev 5

Electrical

Frequency Range	26.3-40 GHz
VSWR	1.2 max

Configuration

Waveguide Size	IEC	R320
	EIA	WR28
Flange	IEC	UBR320
	North America	M3922/54-003(UG599/U)
Coax Connector	2.92mm Female	
Body Geometry	End-launch	

Mechanical & Environmental

Waveguide Body	Cu, acid pickling and passivation, anti-corrosive paint
Connector Body	Passivated stainless steel
Center Contact	Gold plated beryllium copper
Operating Temperature	-40°C to +85°C
Connector Interface	MIL-STD-348
RoHS	Compliant under exemptions 6 (b) or 6 (c)
Net Weight	Approx 25g

Note

* Flange size may not be 100% identical with the above listed standards, but are compatible. Refer to the next page for comparison table.

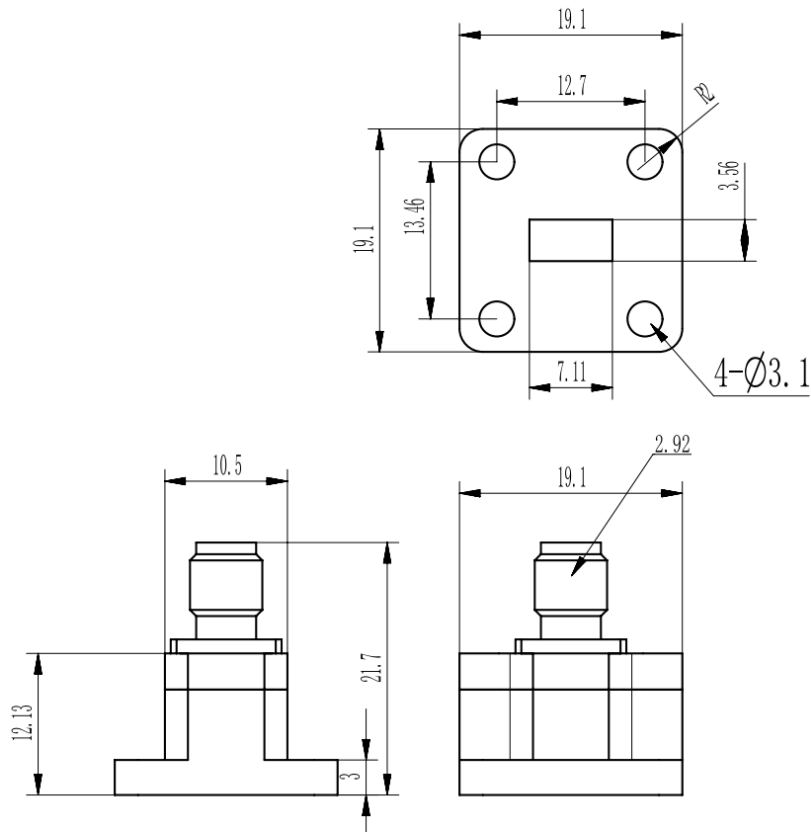
* Paint in grey or black by default, other colors available.



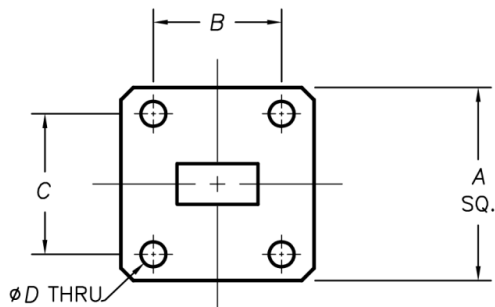
**WR28 to 2.92mm Female Waveguide to Coaxial Adapter
UBR320 Flange, End-launch**

Rev 5

Dimensions(mm)



Flange Comparison (mm)



* The purpose of this comparison is to provide a quick reference of different flange standards. Great care has been given, nevertheless there might be a few mistakes.

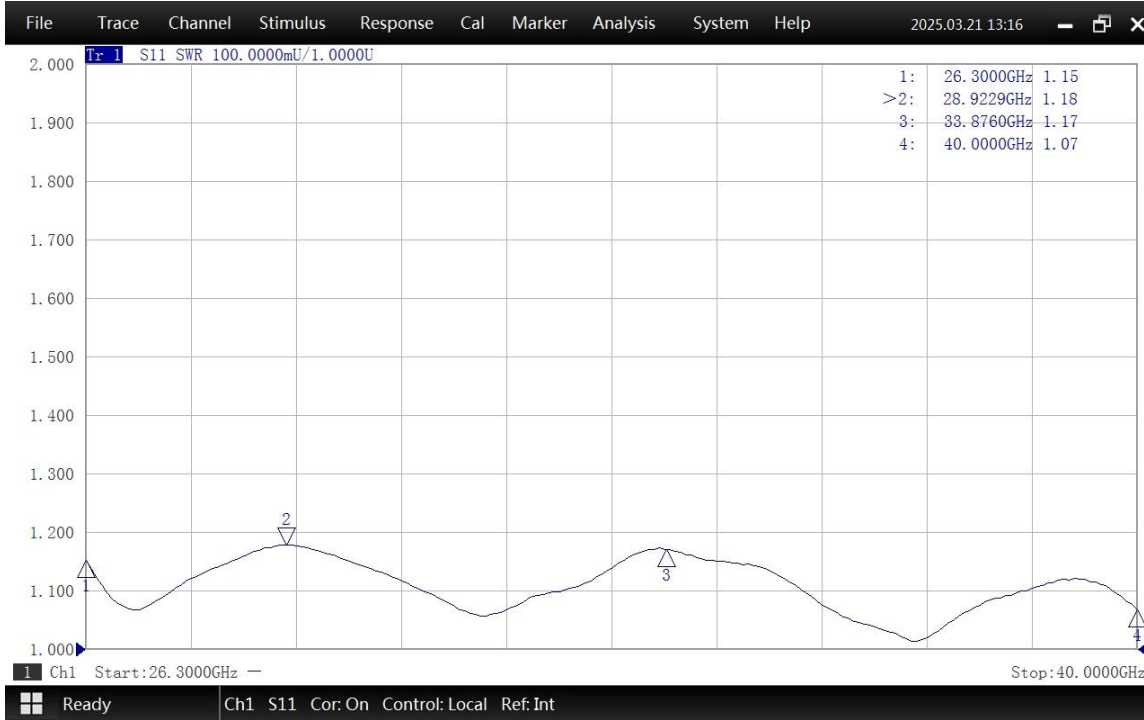
* Please check the flange compatibility before ordering. Customized flanges are available.

WG SIZE	CONFORMING STANDARD	A	B	C	D
WR28	RF ONE:AWR28292EL	19.1	12.7	13.46	3.1
	IEC60154:UBR320	19.10	12.70	13.46	3.00
	USA:MIL3922/54-003(UG599/U)	19.05	12.70	13.46	2.95

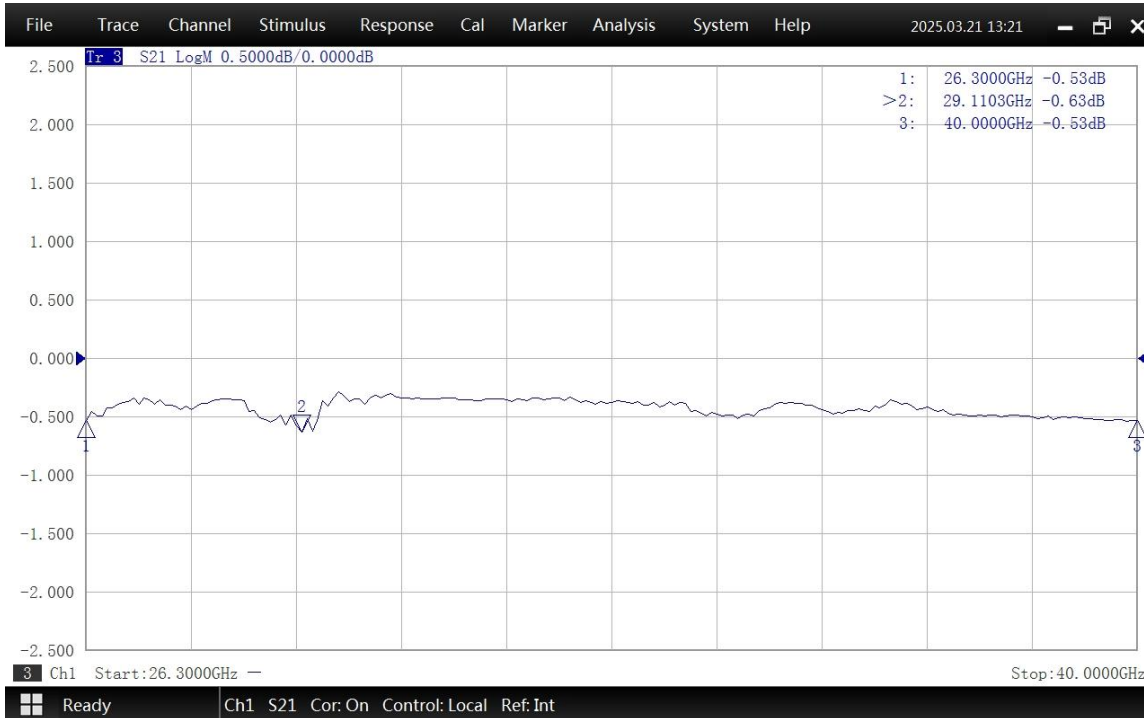


**WR28 to 2.92mm Female Waveguide to Coaxial Adapter
UBR320 Flange, End-launch**

Typical Test Data at 25°C



VSWR



Insertion Loss*

* In Insertion Loss (IL) testing, adapters are measured back-to-back. To obtain the loss of a single adapter, divide the measured value by two.