

**WR159 to SMA Female Waveguide to Coaxial Adapter
PDR58 Flange, Right Angle**

Rev 5

Electrical

Frequency Range	4.64-7.05 GHz
VSWR	1.2 max

Configuration

Waveguide Size	IEC	R58
	EIA	WR159
Flange	IEC	PDR58
	North America	M3922/52-038(UG1355/U) CPR159G
Coax Connector	SMA Female	
Body Geometry	Right Angle	

Mechanical & Environmental

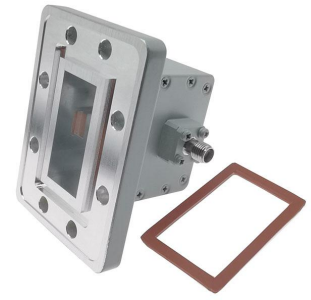
Waveguide Body	Aluminum, conductive oxidation, anti-corrosive paint
Connector Body	Passivated stainless steel
Center Contact	Gold plated beryllium copper
Operating Temperature	-40°C to +85°C
Connector Interface	MIL-STD-348
RoHS	Compliant under exemptions 6 (b) or 6 (c)
Net Weight	Approx 190g

Note

* Flange size may not be 100% identical with the above listed standards, but are compatible. Refer to the next page for comparison table.

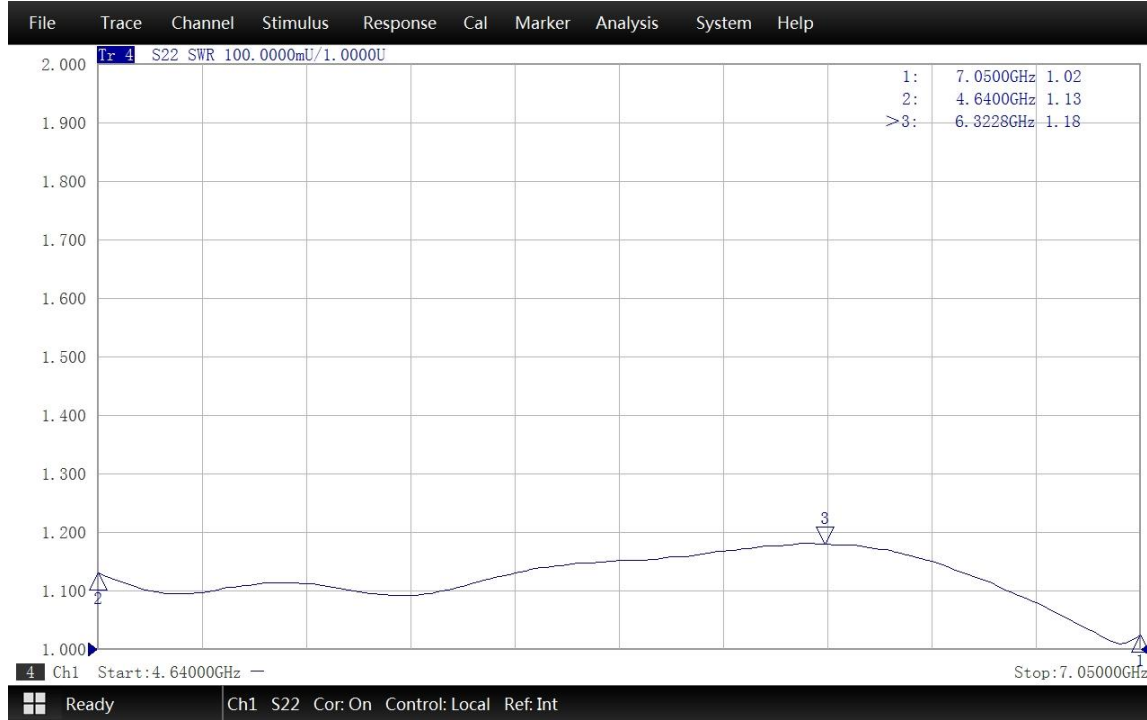
* Paint in grey or black by default, other colors available.

WR159 to SMA Female Waveguide to Coaxial Adapter PDR58 Flange, Right Angle

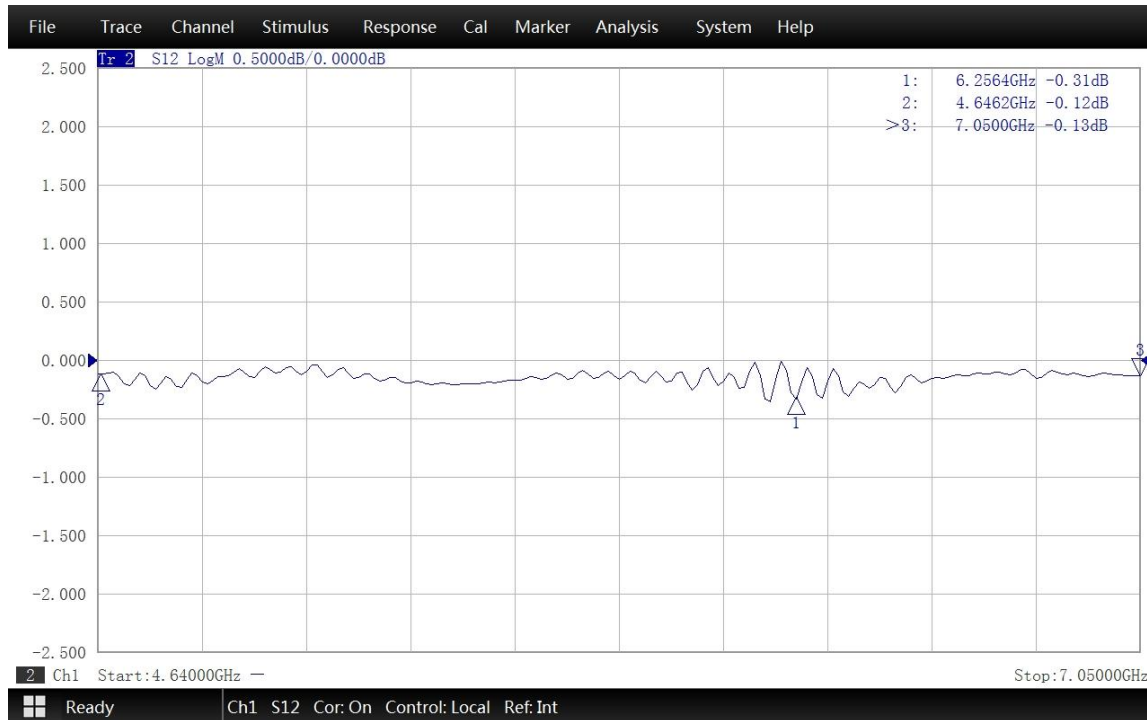


Rev 5

Typical Test Data at 25°C



VSWR



Insertion Loss*

* In Insertion Loss (IL) testing, adapters are measured back-to-back. To obtain the loss of a single adapter, divide the measured value by two.